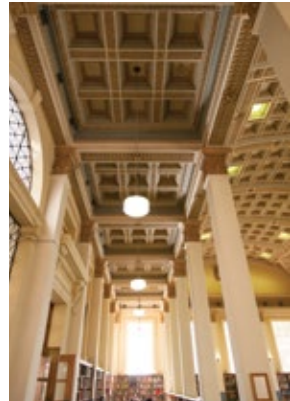
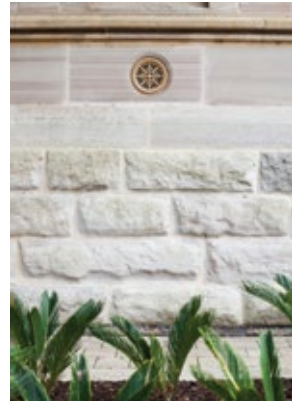


**BRADFORD COLLEGE • 2014 PROSPECTUS**  
Your pathway to the University of Adelaide



# WELCOME

Bradford College is dedicated to providing our students with an education that thoroughly prepares them for success at university. The partnership between the University of Adelaide and Bradford College offers a special opportunity to study on campus and adjust to campus life before you begin your undergraduate studies.

Bradford College provides you with a learning environment where you are respected, guided and encouraged to reach your maximum potential and achieve your goal of entering the University of Adelaide well prepared to face the challenges of undergraduate life. Our highly professional and caring teachers support the students in their learning in an open and friendly environment. We look forward to welcoming you to the College.

**Andrew Foley**  
Campus Director  
Bradford College

The University of Adelaide is internationally recognised for its academic excellence in learning and research. This reputation underpins a unique student experience, rich in discovery that produces graduates with the core skills and attributes most sought by employers around the world.

We warmly welcome students from over 90 countries to our University each year creating a diverse campus community that is focused and hungry to learn and achieve.

In partnership with the University of Adelaide, Bradford College offers a range of study options designed specifically as pathways for students to enter our undergraduate programs. With the College based near the University’s beautiful North Terrace campus, you could soon be following in the footsteps of many great alumni; from Nobel Prize winners to Antarctic explorers and heads of state.

I warmly encourage you to make the most of your Bradford experience as you prepare for entry into your chosen undergraduate program at the University of Adelaide.

**Professor Warren Bebbington**  
Vice-Chancellor and President  
The University of Adelaide



**Wyatt Ng, Hong Kong**  
Pathway to Medicine

*“My course was challenging but you can get support if you need it”*

*I enjoyed having the full support of the teachers the most. They taught us how to reference, which I know will be useful when I go on to study at the University. The student services staff provided further support beyond the teachers.*





*The University of Adelaide is consistently ranked  
in the top 1% of universities in the world*

# CONTENTS

|    |                              |    |                                    |    |   |
|----|------------------------------|----|------------------------------------|----|---|
| 4  | Why choose Bradford College? | 20 | Our Students                       | 30 | International Fees & Entry Requirements |
| 6  | The University of Adelaide   | 22 | Our Campus and Facilities          | 32 | Accommodation Application Form          |
| 8  | University Program Guide     | 24 | Our City                           | 33 | Application Form                        |
| 10 | Pathways to Success          | 26 | Accommodation Options              | 35 | Terms and Conditions                    |
| 12 | Foundation Studies Program   | 28 | Academic Calendar                  |    |   |
| 16 | Degree Transfer Program      | 29 | Domestic Fees & Entry Requirements |    |   |
| 19 | General Academic English     |    |                                    |    |   |



Bradford College reserves the right to alter, amend or delete information relating to courses and student services without prior notice. Bradford College assumes no responsibility for the accuracy of information provided by third parties. Information was correct at time of printing (December 2013).





# WHY CHOOSE BRADFORD COLLEGE?

At Bradford College we provide students with a pathway to undergraduate studies at the University of Adelaide—one of Australia’s prestigious ‘Group of Eight’ universities. The College is located in the heart of the city of Adelaide, South Australia and welcomes around 800 students each year from Australia and around the world.

### On campus

Students at Bradford College are part of the University of Adelaide population; they often have the opportunity to study on campus, share the university resources and facilities, and like all other university students can make the most of the university experience with access to the student union, its clubs and societies.

### University syllabus

Bradford College programs combine bridging and university materials and are designed with support from the University of Adelaide to prepare students for success at university. Students accepted into a Bradford College program may also receive an offer from the University of Adelaide to a corresponding bachelor degree course. Students may choose from a wide selection of degrees at the University, however progression from Bradford College into selected degree programs at the University of Adelaide can be highly competitive. Applications for entry into highly competitive degrees, particularly within Medicine, Dentistry, Veterinary Bioscience and other degrees with a fixed quota are assessed by the University on a case by case basis.

### A choice of programs

Once students complete the Foundation Studies Program and meet the required academic grades determined by the University, they will receive a guaranteed place in the first year of their chosen undergraduate program\* at the University of Adelaide.

Students who complete the Degree Transfer Program and meet the required academic grades determined by the University, will be guaranteed a place in the second year of their selected bachelor degree\*.

Should a student need to improve their English proficiency before commencing their Foundation Studies or Degree Transfer program, they can complete an English language preparation program at Bradford College.

\* Students may not be eligible to select programs with fixed quotas

### A supportive environment

Our experienced and highly qualified academic staff members facilitate individual student needs through an understanding that each student has unique aspirations for their future career. Our students study in small classes where we provide the necessary support and guidance each student needs. Our dedicated and caring Student Services team ensures each student is supported throughout their studies and is able to integrate into the Bradford College and Adelaide community.

### A pathway to success

We provide students with a learning environment that is engaging, caring and academically challenging to prepare them for university life and beyond. Hundreds of Bradford College students have gone on to study the undergraduate degree of their choice at the University of Adelaide. The preparation and support offered by Bradford College has been crucial to their successful transition to the academically rigorous Australian university system.

Bradford College is an ideal choice for students who would like to:

- Achieve the necessary grades required to enter their chosen bachelor degree at the University of Adelaide in either Year 1 or 2
- Prepare for further tertiary education from Year 11 or equivalent
- Study in a supportive yet academically challenging environment
- Improve their English language skills for use in an academic environment



Bradford College is an established pathway college within the Kaplan International division of Kaplan Inc. Kaplan International provides English language programs, higher education, vocational education and financial training globally.

Kaplan is one of the world’s leading providers of lifelong education, helping over one million students achieve their personal educational and career goals each year, through programs of unrivaled quality and individually focused learning outcomes.



**Nazanin Narooei, Iran**  
Pathway to Architectural Design

*“I like everything about studying at Bradford College”*

The best though, are the teachers who are friendly and helpful. I also enjoyed the range of subjects and found computing helped me a lot in my other Foundation Studies subjects and assignments.

### Scholarships

Scholarships are usually available to Bradford College students with excellent academic grades, both for entry to the College and on progression to the University. Ask your Bradford College representative for more information.



A tradition of excellence



# THE UNIVERSITY OF ADELAIDE



## The University of Adelaide at a glance

The University of Adelaide is one of Australia's leading research-intensive universities and is consistently ranked among the top 1% of universities in the world.

Established in 1874, the University of Adelaide is Australia's third oldest university and an iconic Adelaide institution. The University contributes significantly to the health, wealth and wellbeing of South Australia and is a vital part of the cultural, social and intellectual life of the community.

The University has a strong reputation for research and teaching excellence. The University has produced over 100 Rhodes Scholars, including Australia's first Indigenous winner and is associated with five Nobel Laureates.

The University of Adelaide offers a broad range of undergraduate and postgraduate programs underpinned by world-class research and places high priority on the student learning experience.

This unique education experience is characterised by the following key themes:

### Learning at close quarters

Students have opportunities to learn in small groups, peer-to-peer and under the expert guidance of leading academics—this is central to the University of Adelaide learning experience.

### Research skills

University of Adelaide students develop their research skills from undergraduate level and have the chance to embrace the rigour of scientific method, learning the value of innovation and problem solving skills.

### Global citizenship

Students are encouraged to leverage the University's extensive global learning opportunities, to develop intercultural competence and build strong international networks.

### Advanced opportunities

Advanced Bachelor degrees are available to high-performing students keen for an undergraduate experience with greater depth and challenge.

## Personalised learning

The student learning experience is enhanced through greater access to digital and e-learning resources. These technologies support and assist personalised learning but do not replace the quality, face-to-face education delivered on campus.

## Accessibility and choice

The University is dedicated to increasing the accessibility of higher education for all students. The annual Graduate Careers Australia survey places us in the top echelon of Australian universities for teacher quality, skills development and overall student satisfaction.

## A member of the 'Group of Eight'

The University of Adelaide is a member of the 'Group of Eight'—a coalition of Australia's leading universities.

Members of the Group of Eight are committed to excellence in teaching and research and renowned for their world-class achievements.

These universities:

- have nurtured every Nobel Prize winner educated at an Australian university
- are the first choice of the majority of highest qualified Australian school leavers
- offer higher than average staff-to-student ratios
- focus on combining learning with research, delivering an advanced curriculum and research-based learning that produces distinctive graduates
- produce graduates who take up senior positions in business and government in Australia and other countries

The Group of Eight universities have credit transfer agreements that improve student transfer between these institutions.

Please visit [www.go8.edu.au](http://www.go8.edu.au) for further information.







Students studying at the University of Adelaide enjoy access to:

- modern lecture theatres
- state-of-the-art laboratories
- worldwide database access and online teaching tools
- an outstanding library with over two million items
- high quality student support services and accessible accommodation





# UNIVERSITY PROGRAM GUIDE

Choose from the wide range of degrees on offer at the University of Adelaide. Students may choose a progression pathway from Bradford College to suit their unique needs and aspirations.



**Qilin Yang, China**  
Pathway to Architecture Design

*'Its totally different here, I now know what to expect at university'*

*My experience has been interesting and exciting. I have learnt a lot and I like the easy communication between students and teachers in class; it introduces new knowledge in an understandable way.*



| Bachelor Programs                            | Duration (years) | Foundation Studies Program Intakes |      |             | Degree Transfer Program Intakes |         |          |      |             |
|--|------------------|------------------------------------|------|-------------|---------------------------------|---------|----------|------|-------------|
|  |                  | Standard                           |      | Accelerated | Extended                        |         | Standard |      | Accelerated |
|  |                  | February                           | July | October     | March                           | October | February | July | October     |
| B Agricultural Sciences                      | 3                | •                                  | •    | •           |                                 |         |          |      |             |
| B Architectural Design                       | 3                | •                                  |      |             |                                 |         |          |      |             |
| B Arts                                       | 3                | •                                  | •    | •           |                                 |         |          |      |             |
| B Commerce                                   | 3                | •                                  | •    | •           | •                               | •       | •        | •    | •           |
| B Commerce (Accounting)                      | 3                | •                                  | •    | •           | •                               | •       | •        | •    | •           |
| B Commerce (Corporate Finance)               | 3                | •                                  | •    | •           | •                               | •       | •        | •    | •           |
| B Commerce (International Business)          | 3                | •                                  | •    | •           | •                               | •       | •        | •    | •           |
| B Commerce (Management)                      | 3                | •                                  | •    | •           | •                               | •       | •        | •    | •           |
| B Commerce (Marketing)                       | 3                | •                                  | •    | •           | •                               | •       | •        | •    | •           |
| B Computer Science                           | 3                | •                                  | •    | •           | •                               | •       | •        | •    |             |
| B Dental Surgery                             | 5                | •*1                                |      |             |                                 |         |          |      |             |
| B Development Studies                        | 3                | •                                  | •    | •           |                                 |         |          |      |             |
| B Economics                                  | 3                | •                                  | •    | •           | •                               | •       | •        | •    | •           |
| B Engineering (Architectural)                | 4                | •                                  |      |             |                                 |         |          |      |             |
| B Engineering (Chemical)                     | 4                | •                                  | •    | •           |                                 |         |          |      |             |
| B Engineering (Chemical-Minerals Processing) | 4                | •                                  | •    | •           |                                 |         |          |      |             |
| B Engineering (Chemical-Sustainable Energy)  | 4                | •                                  | •    | •           |                                 |         |          |      |             |
| B Engineering (Civil & Environmental)        | 4                | •                                  | •    | •           |                                 |         |          |      |             |
| B Engineering (Civil & Structural)           | 4                | •                                  | •    | •           | •                               | •       | •        | •    |             |
| B Engineering (Computer Systems)             | 4                | •                                  | •    | •           | •                               | •       | •        | •    |             |



| Bachelor Programs                               | Duration (years) | Foundation Studies Program Intakes |      |             | Degree Transfer Program Intakes |         |          |      |             |
|---|------------------|------------------------------------|------|-------------|---------------------------------|---------|----------|------|-------------|
|   |                  | Standard                           |      | Accelerated | Extended                        |         | Standard |      | Accelerated |
|   |                  | February                           | July | October     | March                           | October | February | July | October     |
| B Engineering (Electrical & Electronic)         | 4                | •                                  | •    | •           | •                               | •       | •        | •    |             |
| B Engineering (Electrical & Sustainable Energy) | 4                | •                                  | •    | •           | •                               | •       | •        | •    |             |
| B Engineering (Mechanical)                      | 4                | •                                  | •    | •           | •                               | •       | •        | •    |             |
| B Engineering (Mechanical & Aerospace)          | 4                | •                                  | •    | •           | •                               | •       | •        | •    |             |
| B Engineering (Mechanical & Sports)             | 4                | •                                  | •    | •           |                                 |         |          |      |             |
| B Engineering (Mechanical & Sustainable Energy) | 4                | •                                  | •    | •           | •                               | •       | •        | •    |             |
| B Engineering (Mechatronic)                     | 4                | •                                  | •    | •           | •                               | •       | •        | •    |             |
| B Engineering (Mining)                          | 4                | •                                  | •    | •           |                                 |         |          |      |             |
| B Engineering (Petroleum)                       | 4                | •                                  | •    | •           |                                 |         |          |      |             |
| B Engineering (Pharmaceutical)                  | 4                | •                                  | •    | •           | •                               | •       | •        | •    |             |
| B Engineering (Software)                        | 4                | •                                  | •    | •           | •                               | •       | •        | •    |             |
| B Engineering (Telecommunications)              | 4                | •                                  | •    | •           | •                               | •       | •        | •    |             |
| B Environmental Policy & Management             | 3                | •                                  | •    | •           |                                 |         |          |      |             |
| B Finance                                       | 3                | •                                  | •    | •           | •                               | •       | •        | •    |             |
| B Finance (International)                       | 3                | •                                  | •    | •           | •                               | •       | •        | •    |             |
| B Food & Nutrition Science                      | 3                | •                                  |      |             |                                 |         |          |      |             |
| B Health Sciences                               | 3                | •                                  | •    | •           | •                               | •       | •        | •    |             |
| B Innovation & Entrepreneurship                 | 3                | •                                  | •    | •           | •                               | •       | •        | •    | •           |
| B International Studies                         | 3                | •                                  | •    | •           |                                 |         |          |      |             |
| B Languages                                     | 3                | •                                  |      |             |                                 |         |          |      |             |
| B Laws  | 4                | •                                  |      |             |                                 |         |          |      |             |
| B Mathematical & Computer Sciences              | 3                | •                                  | •    | •           | •                               | •       | •        | •    |             |
| B Mathematical Sciences                         | 3                | •                                  | •    | •           |                                 |         |          |      |             |
| B Media   | 3                | •                                  | •    | •           |                                 |         |          |      |             |
| B Medicine and Surgery                          | 6                | •* †                               |      |             |                                 |         |          |      |             |
| B Music   | 3                | •* †                               |      |             |                                 |         |          |      |             |
| B Nursing                                       | 3                | •* †                               |      |             |                                 |         |          |      |             |
| B Oral Health                                   | 3                | •* †                               |      |             |                                 |         |          |      |             |
| B Psychological Science                         | 3                | •                                  |      |             |                                 |         |          |      |             |
| B Science                                       | 3                | •                                  | •    | •           | •**                             | •       | •        | •**  |             |
| B Science (Animal Science)                      | 3                | •                                  | •    | •           |                                 |         |          |      |             |
| B Science (Biomedical Science)                  | 3                | •                                  | •    | •           | •                               | •       | •        | •    |             |
| B Science (Biotechnology)                       | 3                | •                                  | •    | •           |                                 |         |          |      |             |
| B Science (Evolutionary Biology)                | 3                | •                                  |      |             |                                 | •       | •        |      |             |
| B Science (Laser Physics & Technology)          | 3                | •                                  |      |             |                                 | •       | •        |      |             |
| B Science (Marine Biology)                      | 3                | •                                  | •    | •           |                                 |         |          |      |             |
| B Science (Mineral Geoscience)                  | 3                | •                                  | •    | •           |                                 |         |          |      |             |
| B Science (Molecular & Drug Design)             | 3                | •                                  | •    | •           | •                               | •       | •        | •    |             |
| B Science (Molecular Biology)                   | 3                | •                                  |      |             |                                 | •       | •        |      |             |
| B Science (Nanoscience & Materials)             | 3                | •                                  |      |             |                                 | •       | •        |      |             |
| B Science (Natural Resources)                   | 3                | •                                  | •    | •           |                                 |         |          |      |             |
| B Science (Space Science & Astrophysics)        | 3                | •                                  |      |             |                                 |         |          |      |             |
| B Science (Veterinary Bioscience)               | 3                | •* †                               |      |             |                                 |         |          |      |             |
| B Social Sciences                               | 3                | •                                  | •    | •           |                                 |         |          |      |             |
| B Teaching (as a double degree)                 | 4                | •                                  |      |             |                                 |         |          |      |             |
| B Viticulture & Oenology                        | 4                | •                                  | •    | •           |                                 |         |          |      |             |

• Bachelor is available through this intake.

\* Quotas apply for University of Adelaide acceptance.

\*\* Not all majors offered. Please inquire for availability.

† Other entry criteria applies.

Note: Programs with other entry criteria or quotas cannot be packaged.





**Vicky Cheng, Taiwan**  
 Pathway to Food & Nutrition Science

*It's a different education style compared to what I am used to, but I do enjoy the new ways of learning. My academic English skills have improved a lot and the teachers are very patient. I like the activities and the classes at Bradford College.*



# PATHWAYS TO SUCCESS

Bradford College provides students with an academic pathway suited to their own individual needs and aspirations. The necessary guidance and support is given to ensure that each student is able to fulfil their future career goals.

We welcome both international and more recently domestic students, and whether students are close to home or further away they will find the Bradford team will be there to support them every step of the way.

We understand that international students might need extra language support or help adjusting to learning in Australia. Students can complete an English level test to assess how many weeks language study are required prior to their pathway program. Our standard or extended program options can offer additional time to adapt to tertiary study in Australia.

Dependent on the degree of choice and prior academic achievements we can advise on the best program, duration and intake for both domestic and international students.

Students may choose to enter at Foundation or Degree Transfer level with the option of completing additional language studies to provide students who feel they need extra support with the high-level English language skills required to understand and successfully complete programs at a tertiary level of study.

Students who successfully pass their Foundation or Degree Transfer program examinations first time will not be required to supply additional evidence of English to satisfy university English requirements.

Providing students meet the necessary academic conditions and prerequisites and the program does not have a quota they may progress on to either Year 1 or Year 2 of their chosen degree, depending on the pathway they choose.

## Why choose a Bradford pathway?

- Our programs are stream-based and degree focused, so that upon successful completion students satisfy the entry requirements for their chosen degree. Staff can advise on degree focused program pathways and entry requirements
- Students benefit from studying the University curriculum within smaller classes, receiving the individual attention and additional support required to achieve their academic and career goals
- Bradford students are part of the University of Adelaide population. Students often have the opportunity to study on campus, have access to all university facilities and get a real taste of university life

## Progression to Tertiary Studies

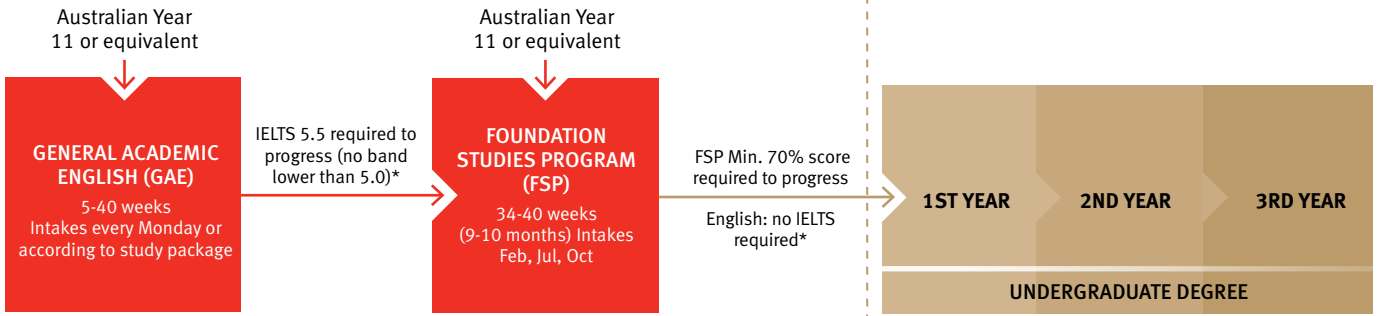
Students who receive marks lower than the threshold published are given assistance with gaining a place in an alternative but related undergraduate program. Our counsellors assist students with this process. Bradford College Foundation Studies graduates have also been accepted at a number of other universities in Australia.



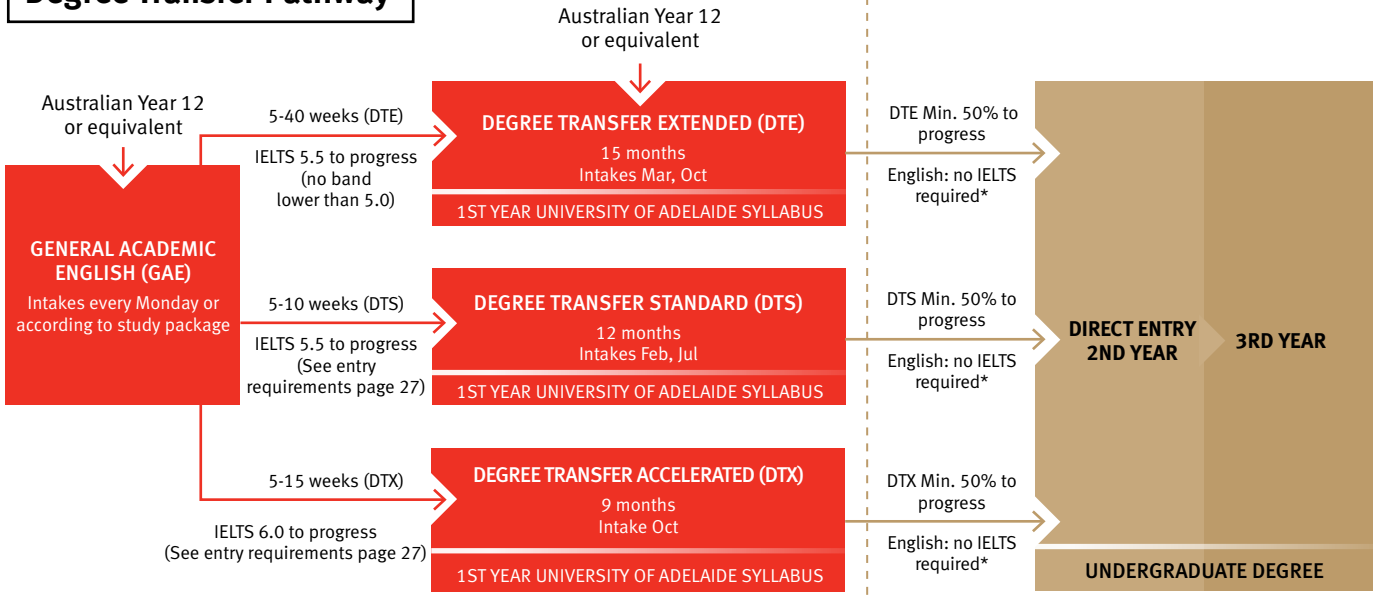




### Foundation Studies Pathway



### Degree Transfer Pathway



\* Students who successfully pass their Foundation Studies Program or Degree Transfer Program examinations first time will not be required to supply evidence of IELTS to satisfy University English requirements.  
Note: Progression marks will depend on degree selected. Refer to entry requirements on page 27. Successful completion of GAE program meets English entry requirements for FSP and DT programs. English entry requirements may be higher for selected programs. e.g. Bachelor of Health Science and Bachelor of Laws.



Exceptional preparation



**Charlie Kong, Hong Kong**  
Pathway to Bachelor of Commerce

*"I would recommend Bradford"*

*I had some friends study at Bradford two years before me and recommend it to my parents. Like them I would recommend my experience. I enjoyed the learning environment and improved my English speaking and learning skills the most.*



# FOUNDATION STUDIES PROGRAM

The Foundation Studies Program prepares students for successful transition to degree-level study and provides a pathway to the first year of a bachelor degree at the University of Adelaide. Program standards including curriculum and assessment are maintained by the University to ensure the highest academic standards.

Students accepted onto the Foundation Studies Program (FSP) receive an offer of a place to their chosen bachelor degree program from the University of Adelaide. Students who would not qualify for direct entry are enrolled as University of Adelaide students with admission conditional upon meeting the necessary prerequisites\*.

Students may change their selected bachelor degree provided any prerequisite subjects are covered. Our supportive staff will recommend subjects based on their long-term study goals. Lectures and tutorials, delivered by attentive teachers in a supportive learning environment, provide students with the academic grounding and confidence required to transition successfully to university. Student progress may be assessed through participation, essays, presentations, assignments and regular tests to ensure students are thoroughly prepared to take on their next academic challenge.

## Pathways to competitive degrees

Academic counselling is available to ensure students take the correct subjects for their chosen bachelor degree. The University of Adelaide Schools of Medicine and Dentistry have additional admissions criteria. Elder Conservatorium of Music and Veterinary Bioscience also have additional admissions criteria.

The University of Adelaide School of Nursing welcomes students from FSP without further language testing (quotas apply). In addition to the recommended prerequisite subjects, Bradford FSP students also study English for Academic Purposes.

## Language Support

Students are required to complete an accepted English language proficiency test or the Bradford placement assessment prior to the program to assess their level of English. This will allow us to recommend a study pathway, with a suitable duration and direction. For students who feel they might need to improve their level of English more information on our General Academic English (GAE) program can be found on page 19.

Students who pass their Foundation Studies Program subjects on the first attempt will meet the English language entry requirement and will not need to submit an IELTS certificate to the University of Adelaide.

## Program Overview

Students must study 5 subjects over 2 semesters. The required subjects will depend upon the bachelor degree program students wish to study at the University of Adelaide. Please refer to page 14 for further information and subject recommendations.

|                          | Standard (FSP)   | Standard (FSP)  | Accelerated (FSPX)        |
|--------------------------|--|---|---------------------------|
| Study weeks              | 40 weeks   | 40 weeks  | 34 weeks                  |
| Intake dates             | 10 Feb 2014 (Standard)   | 28 Jul 2014 (Standard)  | 20 Oct 2014 (Accelerated) |
| Contact hours            | 20 hours per week  | 20 hours per week   | 25 hours per week         |
| Compulsory subjects      | Critical Thinking<br>English for Academic Purposes   |   |                           |
| Other available subjects | Accounting<br>Australian Studies*<br>Economics<br>Computing and Information Systems<br>Design Studies* | Maths Studies<br>Specialist Maths<br>Maths Methods<br>Biology<br>Chemistry<br>Physics |                           |

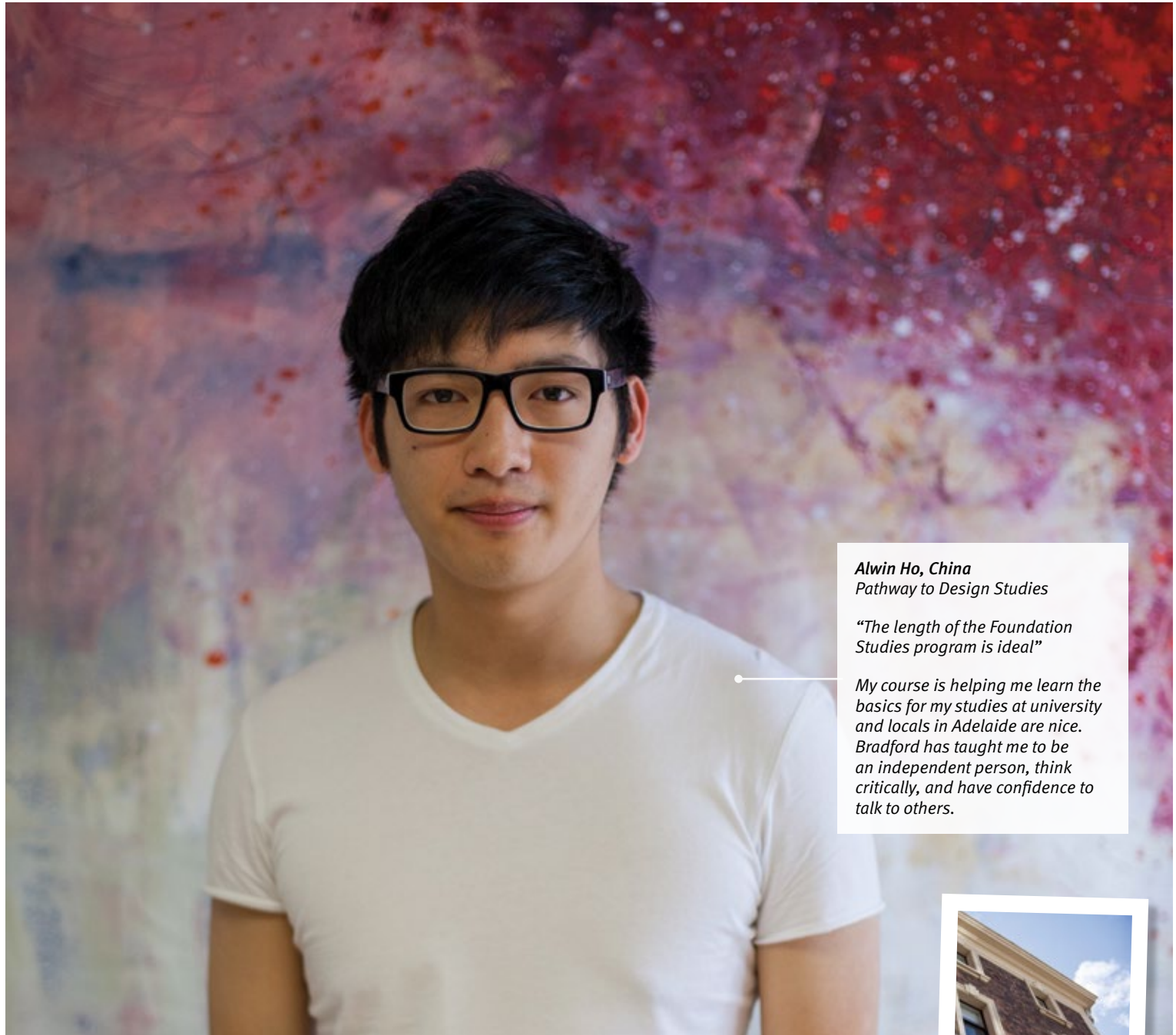
Students must also complete 20-25 hours of independent learning scheduled into a negotiated study plan.

\*Subject available in the February intake only.



\* Students may not be eligible to select programs with fixed quotas.

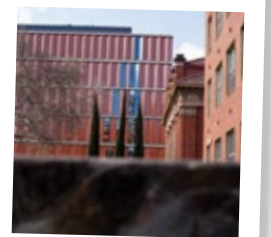
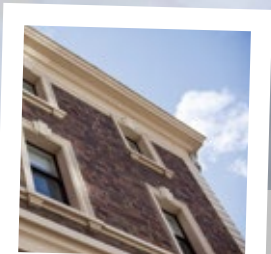




**Alwin Ho, China**  
Pathway to Design Studies

*“The length of the Foundation Studies program is ideal”*

*My course is helping me learn the basics for my studies at university and locals in Adelaide are nice. Bradford has taught me to be an independent person, think critically, and have confidence to talk to others.*



## Foundation Studies Pathway

Upon successful completion of their foundation studies program, students may progress into the first year of their selected undergraduate degree at the University of Adelaide



# FOUNDATION STUDIES CURRICULUM

Some bachelor programs have prerequisite Foundation Studies subjects which must be studied and passed prior to progressing to the chosen bachelor degree at the University of Adelaide. Students must study 5 subjects over 2 semesters and complete the program to the required standard to progress. Bradford College counsellors may provide guidance if required.



| Discipline                    | Intakes       | University of Adelaide Bachelors Degree (First Year entry)                                | Required Progression Score from Bradford | Recommended Subjects   |
|-------------------------------|---------------|---|--|--|
| Architecture & Design         | Feb           | B Architectural Design  | 74%                                      | - Design Studies (Feb only)<br>- Maths Studies<br>- Computing and Information Systems<br>OR Physics OR Australian Studies (Feb only)<br>- Critical Thinking (c)<br>- English for Academic Purposes (c) |
| Commerce                      | Feb, Jul, Oct | B Commerce (Accounting, Corporate Finance, International Business, Management, Marketing) | 77%                                      | - Economics<br>- Maths Studies OR Maths Methods<br>- Accounting OR Computing<br>- Critical Thinking (c)<br>- English for Academic Purposes (c)   |
| Economics Finance             | Feb, Jul, Oct | B Economics   | 74%                                      |  |
|                               | Feb, Jul, Oct | B Finance   | 74%                                      |  |
|                               | Feb, Jul, Oct | B Finance (International)   | 74%                                      |  |
| Innovation & Entrepreneurship | Feb, Jul, Oct | B Innovation & Entrepreneurship   | 70%                                      |  |
| Law                           | Feb           | B Laws  | 80%                                      | - Computing and Information Systems OR Design Studies (Feb only) OR Maths Methods<br>- Australian Studies (Feb only)<br>- Economics<br>- Critical Thinking (c)<br>- English for Academic Purposes (c)  |
|                               | Feb           | B Laws (Double Degrees**)   | 80%                                      |  |
| Computer Science              | Feb, Jul, Oct | B Computer Science  | 70%                                      | - Computing & Information Systems<br>- Maths Studies<br>- Economics OR Design Studies (Feb only) OR Australian Studies (Feb only)<br>- Critical Thinking (c)<br>- English for Academic Purposes (c)    |
|                               | Feb, Jul, Oct | B Mathematical & Computer Sciences  | 70%                                      |  |
| Engineering                   | Feb, Jul, Oct | B Eng (Computer Systems)  | 77%                                      | - Physics<br>- Maths Studies<br>- Specialist Maths<br>- Critical Thinking (c)<br>- English for Academic Purposes (c)   |
|                               | Feb, Jul, Oct | B Eng (Electrical & Electronic)   | 77%                                      |  |
|                               | Feb, Jul, Oct | B Eng (Mechanical)  | 77%                                      |  |
|                               | Feb, Jul, Oct | B Eng (Mechanical & Aerospace)  | 77%                                      |  |
|                               | Feb, Jul, Oct | B Eng (Mechatronic)   | 77%                                      |  |
|                               | Feb, Jul, Oct | B Eng (Mining)  | 77%                                      |  |
|                               | Feb, Jul, Oct | B Eng (Software)  | 77%                                      |  |
|                               | Feb, Jul, Oct | B Eng (Telecommunications)  | 77%                                      |  |



| Discipline                   | Intakes           | University of Adelaide Bachelors Degree (First Year entry)   | Required Progression Score from Bradford | Recommended Subjects  |
|------------------------------|-------------------|--|--|---|
| Engineering                  | Feb, Jul, Oct     | B Eng (Chemical)   | 77%                                      | <ul style="list-style-type: none"> <li>- Physics</li> <li>- Maths Studies</li> <li>- Specialist Maths</li> <li>- Chemistry</li> <li>- English for Academic Purposes (c)</li> </ul>  |
|                              | Feb, Jul, Oct     | B Eng (Chemical - Minerals Processing)   | 77%                                      |   |
|                              | Feb, Jul, Oct     | B Eng (Chemical - Sustainable Energy)  | 77%                                      |   |
|                              | Feb, Jul, Oct     | B Eng (Civil & Environmental)  | 77%                                      |   |
|                              | Feb, Jul, Oct     | B Eng (Civil & Structural)   | 77%                                      |   |
|                              | Feb, Jul, Oct     | B Eng (Petroleum)  | 77%                                      |   |
|                              | Feb, Jul, Oct     | B Eng (Pharmaceutical)   | 77%                                      |   |
| Engineering                  | Feb               | B Eng (Architectural)  | 77%                                      | <ul style="list-style-type: none"> <li>- Physics OR Chemistry OR Biology</li> <li>- Maths Studies</li> <li>- Specialist Maths</li> <li>- Critical Thinking (c)</li> <li>- English for Academic Purposes (c)</li> </ul>  |
|                              | Feb, Jul, Oct     | B Eng (Mechanical & Sport)   | 77%                                      |   |
|                              | Feb, Jul, Oct     | B Eng (Electrical & Sustainable Energy)  | 77%                                      |   |
| Health Science               | Feb               | B Medicine & Surgery*  | 83%                                      | <ul style="list-style-type: none"> <li>- Chemistry</li> <li>- Maths Studies OR Maths Methods</li> <li>- Physics OR Biology</li> <li>- Critical Thinking (c)</li> <li>- English for Academic Purposes (c)</li> </ul> <p>Note: Biology is a prerequisite for Nursing</p>          |
|                              | Feb               | B Dental Surgery*  | 83%                                      |   |
|                              | Feb               | B Nursing*   | 70%                                      |   |
|                              | Feb               | B Oral Health*   | 70%                                      |   |
|                              | Feb, Jul, Oct     | B Health Sciences  | 80%                                      |   |
|                              | Feb               | B Psychological Science  | 74%                                      |   |
| Humanities & Social Sciences | Feb, Jul, Oct     | B Arts   | 70%                                      | <ul style="list-style-type: none"> <li>- Australian Studies (Feb only)</li> <li>- Computing and Information Systems OR Design Studies (Feb only) OR Maths Methods</li> <li>- Economics</li> <li>- Critical Thinking (c)</li> <li>- English for Academic Purposes (c)</li> </ul> |
|                              | Feb, Jul, Oct     | B Development Studies  | 70%                                      |   |
|                              | Feb, Jul, Oct     | B Environmental Policy & Management  | 70%                                      |   |
|                              | Feb, Jul, Oct     | B International Studies  | 70%                                      |   |
|                              | Feb               | B Languages  | 70%                                      |   |
|                              | Feb, Jul, Oct     | B Media (Various specialisations)  | 70%                                      |   |
|                              | Feb               | B Music*   | 70%                                      |   |
|                              | Feb, Jul, Oct     | B Social Science   | 70%                                      |   |
| Mathematical Sciences        | Feb, Jul, Oct     | B Mathematical Sciences  | 77%                                      | <ul style="list-style-type: none"> <li>- Physics OR Critical Thinking</li> <li>- Maths Studies</li> <li>- Specialist Maths</li> <li>- Computing &amp; Information Systems OR Chemistry</li> <li>- English for Academic Purposes (c)</li> </ul>                                  |
|                              | Feb, Jul, Oct     | B Mathematical Sciences (Advanced)   | 88%                                      |   |
| Science                      | Feb, Jul, Oct     | B Agricultural Sciences  | 70%                                      | <ul style="list-style-type: none"> <li>- Chemistry</li> <li>- Maths Studies</li> <li>- Physics OR Biology</li> <li>- Critical Thinking (c)</li> <li>- English for Academic Purposes (c)</li> </ul>  |
|                              | Feb, Jul, Oct     | B Science  | 70%                                      |   |
|                              | Feb, Jul, Oct *** | B Science (Advanced)   | 88%                                      |   |
|                              | Feb               | B Food & Nutrition Science   | 70%                                      |   |
|                              | Feb, Jul, Oct     | B Viticulture & Oenology   | 77%                                      |   |
|                              | Feb, Jul, Oct     | B Science (Animal Science)   | 77%                                      |   |
|                              | Feb               | B Science (Veterinary Bioscience)*   | 83%                                      |   |
|                              | Feb, Jul, Oct     | B Science (Biomedical Science, Biotechnology, Marine Biology, Molecular & Drug Design, Natural Resources, Mineral Geoscience)          | 77%                                      |   |
|                              | Feb               | B Science (Evolutionary Biology, Molecular Biology, Nanoscience & Materials, Space Science & Astrophysics, Laser Physics & Technology) | 77%                                      |   |
| Teaching                     | Feb               | B Teaching/Arts (double degree)  | 74%                                      | See Recommended Subjects associated with specific Bachelor destinations   |
|                              | Feb               | B Teaching/Economics (double degree)   | 74%                                      |   |
|                              | Feb               | B Teaching/Mathematical and Computer Sciences (double degree)  | 74%                                      |   |
|                              | Feb               | B Teaching/Science (double degree)   | 74%                                      |   |

\* Other selection criteria or quotas may apply.

\*\* May study Law as a double degree with degrees as specified in the University of Adelaide 2014 Undergraduate prospectus. Some double degrees may commence in July.

\*\*\*Not all disciplines have July entry – consult Bradford admissions for more information

(c) Compulsory Subject

Some elective subjects may not be offered in every intake and are subject to demand. Students must consult the University of Adelaide 2014 Undergraduate prospectus for the full list and exact pre-requisite subjects for their preferred degree.



**Shirley Kong, China**  
Pathway to Food & Nutrition Science

*“The study and pathway advice I have received has helped me”*

*The study environment is great. Some of my favourite times at Bradford are when I have had time chatting with the teachers during class. The thing I like most though is the place I live; my host family is really nice.*



# DEGREE TRANSFER PROGRAM

Successful completion of the Degree Transfer program leads to a place in the second year of selected bachelor programs at the University of Adelaide. Students can choose a Degree Transfer program according to their individual needs, academic advancement and unique career aspirations.

Students who successfully complete their Degree Transfer program and meet the required academic grades determined by the University will secure a place in the second year of their selected undergraduate program at the University of Adelaide. The Degree Transfer program is a combination of bridging material and first year course material from the University of Adelaide degree program with students sitting the same exams as the first year University students.

The curriculum table on page 18 shows the subjects included as part of the University study plan for each stream. The English component offered by Bradford College is skills-focused and aims to assist students with developing their academic writing, speaking, listening and reading skills, in addition to increasing confidence in tutorials and improving note taking and referencing skills.

## Pathways to competitive degrees

The Degree Transfer (DT) Health Sciences pathway also provides students with the option to apply for entry into the first year of the Bachelor of Nursing degree upon completion of the DT program. Please ask your Bradford representative for further information.

## Language Support

For students who feel they might need to improve their level of English more information on our General Academic English program can be found on page 19.

Students who pass their Degree Transfer subjects on the first attempt will meet the English language entry requirement and will not need to supply additional evidence of English proficiency to the University of Adelaide.

## Program Options

Our Degree Transfer options include an extended three-semester program plus, an accelerated and a standard two-semester direct entry option. The accelerated and standard options are designed to provide students with a pathway to suit their academic ability and the varying levels of knowledge, confidence and experience. Please turn to page 18 to find out what subjects are included as part of the Degree Transfer program.

## Degree Transfer Extended (DTE)

DTE offers students a 15-week bridging semester followed by two semesters comprising of the first-year curriculum of a bachelor degree program at the University of Adelaide. This program allows students to settle in to their new learning environment while preparing them for tertiary learning.

## Degree Transfer Standard (DTS)

DTS offers students with sufficient English and academic qualifications to waive the bridging semester included as part of DTE. Students on the DTS program study the first year University of Adelaide curriculum with the guidance and support of Bradford College.

## Degree Transfer Accelerated (DTX)

DTX is an accelerated program within the Commerce stream allowing students to gain entry into the second year of their selected bachelor program at the University of Adelaide in July.

## Program Overview

Students must study four units plus English each semester.

|                | DTE  | DTS  | DTX                                    |
|----------------|--|--|--|
| Program length | 15 months<br>1 Bridging Semester<br>+ 2 Semesters  | 12 months<br>2 Semesters   | 9 months<br>2 Semesters                |
| Intake dates   | 17 Mar 2014<br>27 Oct 2014   | 24 Feb 2014<br>21 Jul 2014   | 13 Oct 2014                            |
| Contact hours  | 18 hours per week<br>Bridging Semester<br>Semester 1 & 2<br>Depend on choice<br>of Bachelor Degree | Depend on choice<br>of Bachelor Degree   | Depend on choice<br>of Bachelor Degree |
| Streams        | Commerce<br>Economics<br>Finance<br>Engineering<br>Computer Science<br>Science*<br>Health Science  | Commerce<br>Economics<br>Finance<br>Engineering<br>Computer Science<br>Science**<br>Health Science | Commerce<br>Economics                  |

\* Science intake in March, not all majors offered. Please inquire for availability.

\*\* Science intake in July, not all majors offered. Please inquire for availability.

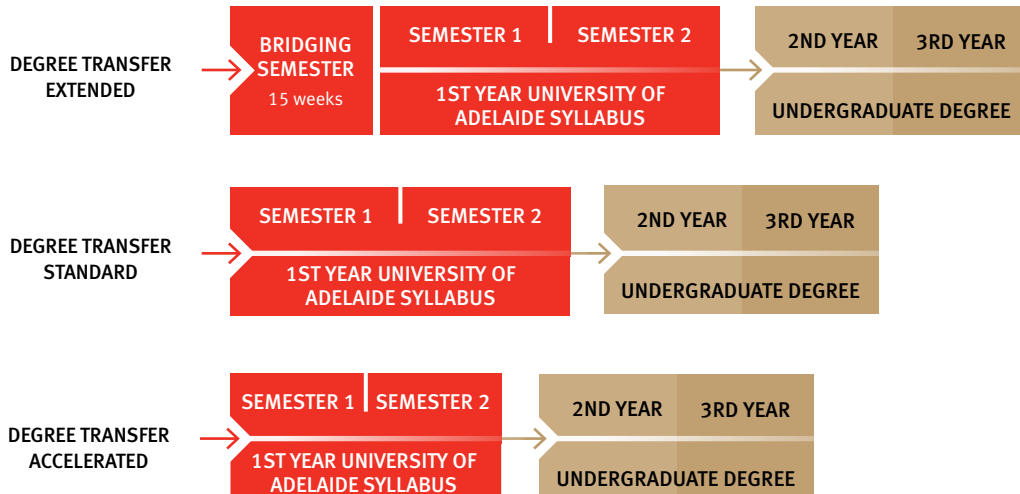
Credit Transfer – Students can only apply for credit for subjects considered equivalent in content and standard to the subjects offered in the Bridging Semester of the Degree Transfer program.





## Degree Transfer Pathway

Upon successful completion of their degree transfer program, students may progress into the second year of their selected undergraduate degree at the University of Adelaide



# DEGREE TRANSFER CURRICULUM

| Discipline       | Intakes                                 | Bridging Semester (DTE Only)  | Degree Transfer Subjects (1st Year University syllabus)<br>Students must complete four subjects plus English each semester   |   | University of Adelaide Bachelor Degree Destinations (2nd Year)   |
|------------------|---|---|--|---|--|
| Commerce         | DTE Mar, Oct<br>DTS Feb, Jul<br>DTX Oct | Accounting<br>Economics<br>Commercial Law<br>Statistics<br>English    | - Principles of Microeconomics 1<br>- Business & Economic Statistics 1<br>- Accounting for Decision Makers 1<br>- Information Systems 1<br>- English   | - Principles of Macroeconomics 1<br>- Accounting Method 1<br>- Commercial Law 1<br>- English<br>One of:<br>- Australia & the Global Economy OR<br>- Introduction to Mathematical Economics (Advanced)   | <b>B Innovation &amp; Entrepreneurship</b><br><b>B Commerce</b><br>Accounting<br>Corporate Finance<br>International Business<br>Marketing<br>Management  |
| Computer Science | DTE Mar, Oct<br>DTS Feb, Jul            | Computing<br>Core Maths<br>Engineering Maths<br>Statistics<br>English | - Introduction to Programming<br>- Maths 1A<br>- Puzzle Based Learning<br>- Statistical Practice 1<br>- English  | - Internet Computing<br>- Maths 1B<br>- Maths for Information Technology 1<br>- Object Oriented Programming<br>- English  | <b>B Computer Science</b>  |
| Economics        | DTE Mar, Oct<br>DTS Feb, Jul<br>DTX Oct | Accounting<br>Economics<br>Commercial Law<br>Statistics<br>English    | - Principles of Microeconomics 1<br>- Business & Economic Statistics 1<br>- English<br>2 subjects from:<br>- Accounting for Decision Makers 1<br>- Information Systems 1<br>- International Financial Institutions & Markets 1   | - Principles of Macroeconomics 1<br>- Introduction to Mathematical Economics (Advanced)<br>- English<br>2 subjects from:<br>- Commercial Law 1<br>- Australia & the Global Economy<br>- Accounting for Decision Makers 1<br>- Accounting Method 1   | <b>B Economics</b>   |
| Engineering      | DTE Mar, Oct<br>DTS Feb, Jul            | Core Maths<br>Engineering<br>Physics<br>English                       | - Maths 1A<br>- Physics 1A<br>- Chemistry 1A<br>- Biology 1: Molecules Genes & Cells<br>- Introduction to Process Engineering<br>- Engineering Mechanics - Statics<br>- Geology for Engineers<br>- Engineering Planning & Design 1A<br>- Electrical & Electronic Engineering 1A<br>- Introduction to Mechanical Engineering<br>- Introduction to Mechatronic Engineering<br>- Introduction to Aerospace Engineering<br>- Introduction to Programming for Engineers<br>- English<br><br>Note: Subject choices are dependent on which Bachelor Destination is chosen | - Maths 1B<br>- Physics 1B<br>- Chemistry 1B<br>- Biology 1: Human Perspectives<br>- Professional Practice 1<br>- Electrical & Electronic Engineering 1B<br>- Civil & Environmental Engineering 1<br>- Engineering Modelling & Analysis 1A<br>- Engineering Mechanics - Dynamics<br>- Materials 1<br>- Design Graphics & Communication<br>- Object Oriented Programming<br>- English<br><br>Note: Subject choices are dependent on which Bachelor Destination is chosen | <b>B Engineering</b><br>Mechanical<br>Mechanical and Aerospace<br>Mechatronic<br>Civil & Structural<br>Electrical & Electronic<br>Telecommunications<br>Software<br>Pharmaceutical<br>Electrical & Sustainable Energy<br>Mechanical & Sustainable Energy<br>Computer Systems |
| Finance          | DTE Mar, Oct<br>DTS Feb, Jul            | Accounting<br>Economics<br>Core Maths<br>Statistics<br>English        | - Principles of Microeconomics 1<br>- Business & Economic Statistics 1<br>- International Financial Institutions & Markets 1<br>- English<br>One of:<br>- Maths 1A OR<br>- Introduction to Financial Maths   | - Principles of Macroeconomics 1<br>- Accounting for Decision Makers 1<br>- English<br>One of:<br>- Commercial Law 1 OR<br>- Australia & the Global Economy<br>One of:<br>- Maths 1B OR<br>- Applications of Quantitative Methods in Finance  | <b>B Finance</b><br>B Finance (International)  |
| Health Science   | DTE Mar, Oct<br>DTS Feb, Jul            | Biology<br>Chemistry<br>Core Maths<br>English                         | - Chemistry 1A<br>- Biology 1: Molecules Genes & Cells<br>- Human Biology 1A<br>- Public Health 1A<br>- English  | - Chemistry 1B<br>- Human Biology 1B<br>- Public Health 1B<br>- Statistical Practice 1<br>- English   | <b>B Health Sciences</b>   |
| Science          | DTE Mar, Oct<br>DTS Feb, Jul            | Biology<br>Chemistry<br>Core Maths<br>English                         | - Chemistry 1A<br>- Biology 1: Molecules Genes & Cells<br>- Maths 1A<br>- Physics: Physical Aspects of Nature<br>- English   | - Chemistry 1B<br>- Biology 1: Human Perspectives<br>- Maths 1B<br>- Statistical Practice 1<br>- English  | <b>B Science</b><br>B Science (Biomedical)<br>B Science (Molecular & Drug Design)  |
| Science          | DTE Oct<br>DTS Feb                      | Biology<br>Chemistry<br>Core Maths<br>English                         | - Chemistry 1A<br>- Biology 1: Molecules Genes & Cells<br>- Maths 1A<br>- Physics: Physical Aspects of Nature<br>- English   | - Chemistry 1B<br>- Biology 1: Human Perspectives<br>- Maths 1B<br>- Statistical Practice 1<br>- English  | B Science (Evolutionary Biology)<br>B Science (Molecular Biology)<br>B Science (Nanoscience & Materials)<br>B Science (Laser Physics & Technology)   |

Subjects may vary depending on time of intake and bachelor degree choice. Subjects offered by Bradford College may change based on the University of Adelaide requirements. The Degree Transfer (Health Sciences) pathway also provides students with the option to apply for entry into first year of the Bachelor of Nursing degree upon completion of the DT program. Bachelor of Nursing, strict quotas apply. The standard cut-off is the minimum academic threshold, above which, applications will be ranked on merit. In addition to academic performance, other selection criteria may affect merit ranking. See [www.bradford.adelaide.edu.au/dt](http://www.bradford.adelaide.edu.au/dt) for more information regarding intakes and subject availability.





**Maryam Al-Hawati, Oman**  
Pathway to Biomedical Science

 **Winner Bradford General Academic English Award, 2013**

*My favourite moment was being awarded a certificate for being the top student in GAE, my communications skills have improved while I have benefitted considerably from getting to know people from all over the world. Bradford is famous for the quality of education it provides.*



# GENERAL ACADEMIC ENGLISH

Our General Academic English (GAE) program is designed to provide international students with the high-level English language skills required to enter, participate confidently in and successfully complete their chosen tertiary program.

Designed and taught by highly qualified and experienced TESOL professionals and accredited by the National ELT Accreditation Scheme (NEAS), our GAE program offers more than effective communication skills. Emphasis is placed on improving students' language skills in speaking, listening, reading and writing through a variety of interesting topics related to study in Australia. Acculturation into an English speaking academic environment at a tertiary level is also important for international students and a phase that is vital for ongoing success.

Students learn in small classes and are assessed weekly to monitor progress. Ongoing assessment and classroom participation are used to determine our students' readiness to enter their chosen academic program.

We recommend students complete our free placement test to assess their level of English prior to commencing their course. This will allow us to recommend a study pathway with a suitable duration and direction.

Successful completion of GAE program meets English entry requirements for Foundation Studies and Degree Transfer programs.

## Program Overview

| Intakes  | Contact hours     | Class size |
|--|-------------------|------------|
| Correspond with chosen FSP or DT program entry | 20 hours per week | Average 15 |

All applications will be assessed on an individual basis. IELTS or equivalent score on an alternative English test is required.



English programs are accredited by the National ELT Accreditation Scheme (NEAS)

## Recommended Study Duration

Students are required to complete the recommended program duration according to their current English level

| English level  | Recommended GAE Duration |  |              |               |               |
|--|--------------------------|--|--------------|---------------|---------------|
|  | IELTS                    | iBt TOEFL Score                                  | FSP/DTE      | DTS           | DTX           |
| IELTS 4.5 overall (two bands of 4.0 and one band of 4.5) or equivalent   |                          | 36 Overall<br>11 or above in Speaking & Writing  | 30 weeks     | Not available | Not available |
| IELTS 4.5 overall (three bands of 4.5 or higher) or equivalent           |                          | 40 Overall<br>11 or above in Speaking & Writing  | 25 weeks     | Not available | Not available |
| IELTS 5.0 overall (no more than one band of 4.0) or equivalent           |                          | 43 Overall<br>12 or above in Speaking & Writing  | 20 weeks     | Not available | Not available |
| IELTS 5.0 overall (no more than two bands of 4.5) or equivalent          |                          | 46 Overall<br>12 or above in Speaking & Writing  | 15 weeks     | Not available | Not available |
| IELTS 5.0 overall (no more than one band of 4.5) or equivalent           |                          | 48 Overall<br>13 or above in Speaking & Writing  | 10 weeks     | Not available | Not available |
| IELTS 5.0 overall (all bands 5.0 or above) or equivalent                 |                          | 50 Overall<br>14 or above in Speaking & Writing  | 5 weeks      | Not available | Not available |
| IELTS 5.5 overall (all bands 5.0 or above) or equivalent                 |                          | 50 Overall<br>15 or above in Speaking & Writing  | Not required | 10 weeks      | 15 weeks      |
| IELTS 5.5 overall (Speaking OR Writing band 5.5 or above) or equivalent  |                          | 50 Overall<br>16 or above in Speaking OR Writing | Not required | 5 weeks       | 10 weeks      |
| IELTS 5.5 overall (Speaking and Writing band 5.5 or above) or equivalent |                          | 50 Overall<br>16 or above in Speaking & Writing  | Not required | Not required  | 5 weeks       |
| IELTS 6.0 overall (all bands 5.5 or above) or equivalent                 |                          | 57 Overall<br>17 or above in Speaking & Writing  | Not required | Not required  | Not required  |

Registered higher education provider Kaplan Business School Pty Ltd. trading as Bradford College CRICOS: 02426B (English Language programs).



# OUR STUDENTS

We recognise that each and every student has their own academic and career goals and therefore different needs and expectations. Bradford College offers a range of academic pathways to suit:

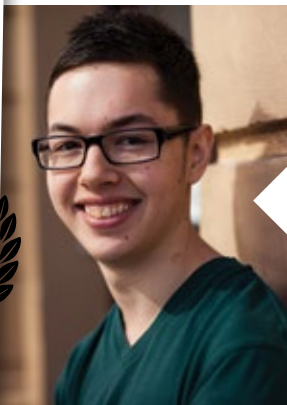
We share with every student, both current and former, the joy of his or her achievement and success.

We take pride in providing the support they need throughout their academic journey with Bradford and beyond. Here is a selection of our most recent success stories...



Maryam Al-Hawati





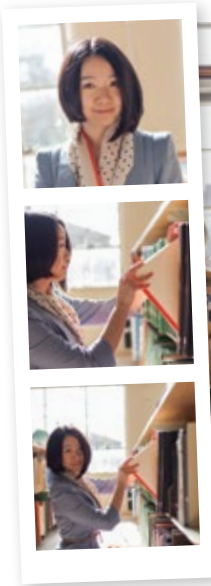
*“It is the best pathway to the University of Adelaide”*

James Wong, Malaysia | Studying Bachelor of Commerce - International Studies & Economics

I have found getting used to the facilities on campus and settling into life in laidback Adelaide, while studying at Bradford has benefitted me. I improved my time management and feel I was well prepared for university. My favourite time was getting the results at the end of each trimester!

James has an amazing determination and the will to overcome challenges. Born with part of his left arm missing, he took up swimming after a near-drowning incident at age 7. He is now a successful Paralympic swimmer with aspirations to win Malaysia’s first Paralympic medal.

**Winner: Governor’s International Student Awards – Sporting Achievement 2012.**



*“I am proud to say that I graduated from Bradford College”*

Harley Zhang, China | Studying Bachelor of Commerce - International Business

It was more than just a great study experience that Bradford left me. The staff there helped me to settle in and develop a better understanding of life in Adelaide, adapt to the study methods used in higher education, and build up a social and support network, which has been very helpful further on.

There is a huge diversity within the courses; each student can find the combination most suitable to them. While studying I stayed in a homestay arranged by Bradford and I met my best friend there – I heard it was not just me, but many Bradford students have made friends forever with their roommates or landlords.

The teaching and studying approach encourages students to be active and get involved rather than spending hours alone in the library. The teachers at Bradford are real people with real personality, who care about their students more than just their grades. From my experience, Bradford teachers always seek the uniqueness in students and helped them to make it shine.

I would definitely recommend Bradford as I would have got lost without the fundamental training I received. My experience at Bradford was wonderful, something I can remember my whole life.



*“Bradford has taught me to value education, have integrity and to respect others.”*

Adrian Du, China | Studying Bachelor of Engineering (Mechatronic)

Adelaide is welcoming and it is easy for people to be accepted – people want to talk to international students to learn about and experience their culture. The city is cheap compared to others, and there is a better quality standard of living, everything is close to the university.

I received the award due to my work with others. I am interested in paying back the help that I received when I arrived in Australia. The support I have received has taught me about integrity, to go above and beyond a job description to help others – this has inspired me in my community works.

My Bradford experience was amazing, you could always count on personal help. The extra contact and longer tutorial sessions Bradford provided as part of the course were extremely useful, helped establish patterns of study, guide academic progress and to prepare for university life.

**Winner: International Student of the Year Award 2013**

The Award, presented by the Council of International Students Australia, recognises significant contributions international students make to the Australian community. Adrian was recognised for his commitment to environmental issues, social justice, and equality.

A supportive environment.



# OUR CAMPUS AND FACILITIES

Located in the city centre, our campus is moments from the University of Adelaide campus and close to Rundle Mall, the main shopping precinct and the heart of entertainment in Adelaide.

Bradford College is a modern and spacious building providing students with dedicated classrooms, study areas, computer suites, a student kitchen and common room. The student common room is exclusively for student use, providing a great place to meet with friends, eat and relax. The common room includes a piano, foosball table, student kitchen, vending machine and couches.

Some lectures and classes are conducted on the main University campus while others are held on site at the College. All Bradford students are enrolled as part of the University of Adelaide, and have access to the University resources and facilities, including the library, student intranet, email and wireless facility plus the students union, its clubs and societies.

Our combination of quality facilities and services, friendly learning environment and supportive staff, provides our students the opportunity to fulfil their potential and go on to achieve their goals at university.

### Learning Support

On campus learning support sessions are available to students who require individual academic or English language assistance and feedback. Sessions may be booked with program tutors directly.

### Student Services

Our Student Services team often welcomes students upon their arrival in Adelaide, they also organise activities and social events and are able to offer accommodation and transportation advice to students.

Our orientation program is compulsory for all students new to the College and provides them with essential information regarding their enrolment, pathway options, college and recreational facilities, as well as their responsibilities as a student, living and working locally.

Academic performance is monitored closely to assist students with any problems or questions they might have with regards to study skills and workload management. Students may also seek advice on career pathways, study options and university applications.

The happiness and well-being of all our students is important during their time at the College. Students may meet with our Student Services team at any time to discuss any problems or concerns that may arise. The College closely supervises students under 18 years of age with regular meetings and reports back to parents.

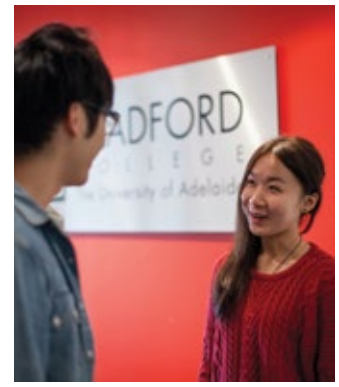
### University Facilities

The University campus is less than 5 minutes away on foot and Bradford students are able to take advantage of the excellent educational and recreational facilities including Hub Central; the Barr Smith Library; the wireless network and available computer suites. A University bookshop, image and copy centre, post office and ATM also ensure students are able to find what they need on campus.

The Barr Smith Library is the main library of the University of Adelaide, located at the centre of the North Terrace campus. Bradford students have access to the library, its resources, systems and support services which include the University Librarian, research librarians, information literacy programs and of course – the membership and lending services. The library physically holds (print and microform) in excess of 2 million items which support the research strengths of the University and the electronic holdings include access to an estimated 25 million journal articles, covering more than 20,000 e-journal titles.

Find out more or take a tour online at [www.adelaide.edu.au](http://www.adelaide.edu.au)





*Student services staff welcome students on arrival.*



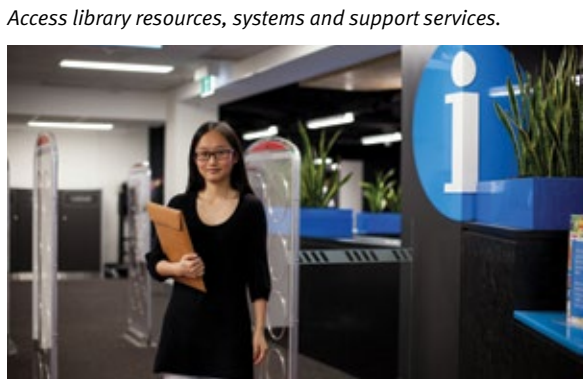
*The common room is a great place to relax.*



*Modern facilities in a spacious environment.*



*Hub Central is great for socialising.*



*Access library resources, systems and support services.*

*The Barr Smith Library provides many resources.*





## OUR CITY

Adelaide is the capital of South Australia, has a population of around 1.2 million, is currently ranked in the top ten of the world's most liveable cities and is one of Australia's most affordable destinations.

With a mild climate, a year round calendar of events, lots of outdoor activities, a relaxed and cosmopolitan lifestyle and a continued tradition of academic and educational excellence Adelaide is the perfect place to study.

The city centre is compact, easy to travel and bordered on one side with the breathtaking Adelaide Hills and some 22km of picturesque white sandy beaches on the other.

Central Adelaide is perfect for exploring on foot or by bike, but a range of public transport options are also available which are easily accessible, discounted for students and in some cases free.

The City Loop and Adelaide Connector buses link all major central sights and amenities and are free of charge. Students can travel for free between South Terrace and the Entertainment Centre for example. These routes are shown on the map opposite along with some of the major attractions in addition to the best places to shop, eat and drink.

For more information visit [www.cityofadelaide.com.au](http://www.cityofadelaide.com.au) or [www.studyadelaide.com.au](http://www.studyadelaide.com.au)



Central Market



Bradford College



River Torrens



Festival Centre

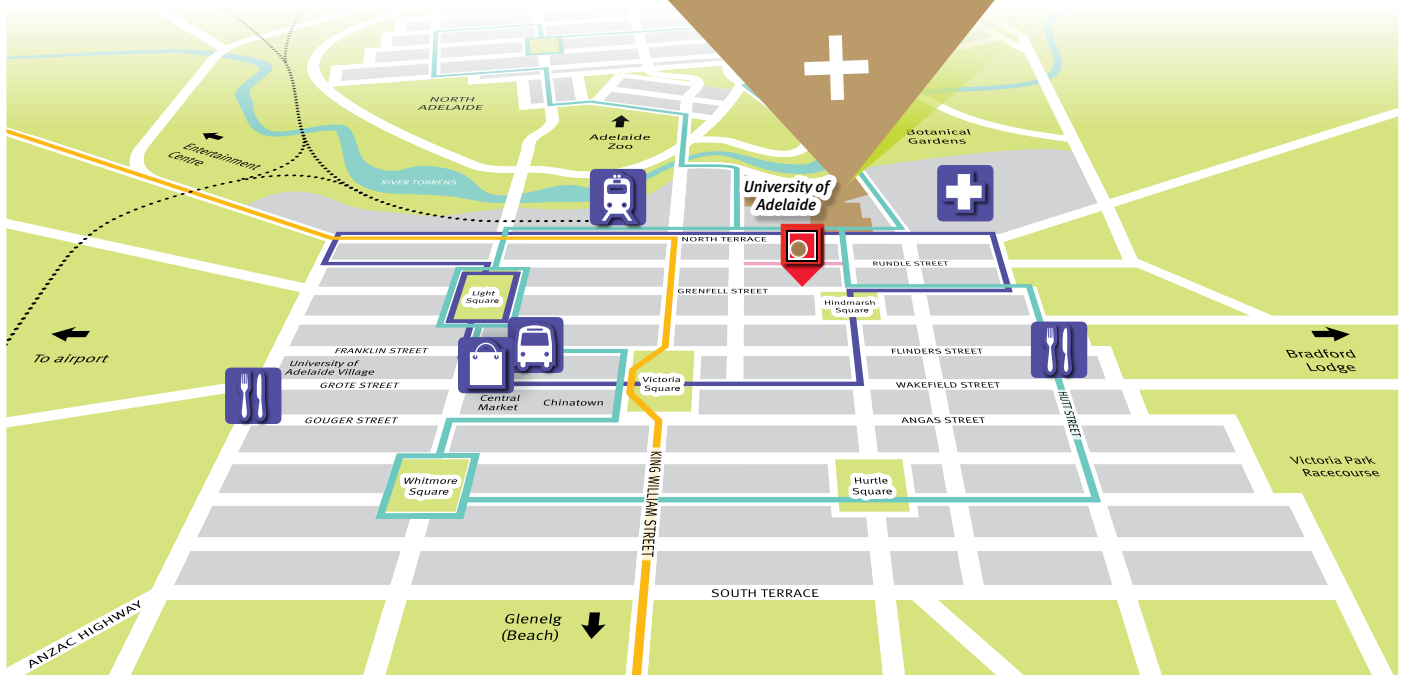
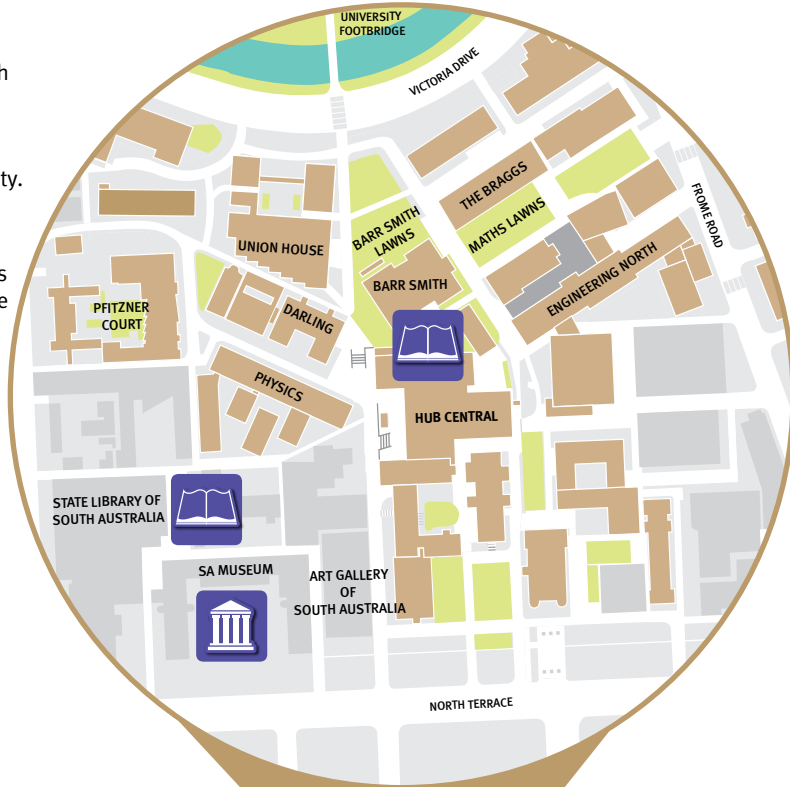




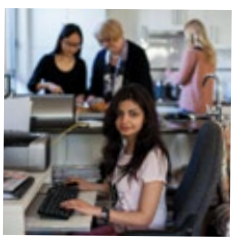
# WE ARE HERE

Bradford College is moments away from the main University of Adelaide campus on North Terrace. This campus is the site of most of University's teaching and research facilities, and it offers both excellent educational and social facilities, in the cultural heart of the city.

For students at Bradford, it is less than a 10-minute walk to lectures, Hub Central, the Barr Smith library and all that the campus has to offer including Union House – home to the Sports Hub Fitness Centre and the UniBar.



- City Loop Bus (Free)
- Tramline
- Adelaide Connector Bus (Free)
- Train Line
- Pedestrian Mall
- Adelaide Central Station
- Bus Stop
- Library
- Royal Adelaide Hospital
- Restaurant Precinct
- Museum
- Bradford College Campus
- University of Adelaide Campus



# ACCOMMODATION OPTIONS

Student accommodation is affordable and widely available in and around the city with easy access to public transport. We provide a range of accommodation options, which can be booked once a student has accepted their offer and enrolled. Our accommodation manager is able to provide students with placement assistance and ongoing support and advice during their stay.

### Homestay

Homestay offers a uniquely Australian experience, whereby students live with a local family in their home, where meals and a comfortable single room are provided. This option is ideal for students who wish to develop their English language skills in natural and relaxed surroundings. Our homestays are carefully selected to provide a safe, structured and welcoming home environment to help you settle quickly and adjust to the Australian lifestyle.

### Student Hostels

Our hostels provide students with a more student community focused independent living option, usually sharing facilities and cooking and cleaning for themselves. Student hostels are a great way to meet other students from around the world and make friends for life.

If you would like to find out more about our below hostel options please contact Bradford College's Accommodation Manager.

### Bradford Lodge - 46 Watson Avenue, Rose Park SA 5067

Suitable for all students, including those under 18 years of age, Bradford Lodge, offers comfortable and clean single rooms with the added security of electronic security tags to access floors and rooms plus an onsite duty manager.

Located on the city fringe, students enjoy the convenient but peaceful area.

### Highgate Lodge- 40 Cheltenham Street, Highgate SA 5063

Highgate lodge is located in the leafy suburb of Highgate and offers students a friendly and convenient self-catering accommodation option. Football fields and tennis courts located across the road are available for use by residents of Highgate.

### University Village

#### 210 Grote Street, Adelaide SA 5000

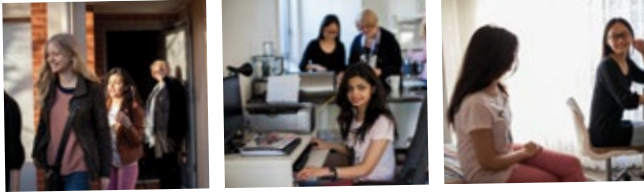
Accommodation at the University of Adelaide Village has been carefully designed to cater for the wide range of students' needs. The Village reception is staffed around the clock and provides a safe and supportive environment with community feel. The Village contains study areas including a computer room with printing facilities, as well as a large student lounge which offers recreational facilities including a pool table, table-tennis, television, DVD player, stereo and wireless internet.

Please contact the Accommodation Manager at Bradford College for an application form. Acceptance is subject to approval.

Please refer to page 30 for fees.



## Homestay



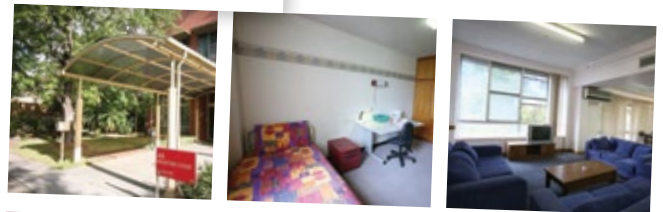
- Safe, welcoming and supportive family environment
- Immersion in the Australian culture and guidance to help adjust quickly
- Opportunity to improve English in relaxed surroundings
- Full board option includes 3 meals per day plus laundry
- Part board option excludes meals and laundry
- Internet access – Per week \$5 (AUD approximate)
- Location varies but travel time within 30 minutes (approximate) to college by bus
- Ideal for students under 18 years of age

## University Village



- Safe and supportive student community managed by the University of Adelaide
- Shared facilities including kitchen and common room between 5 rooms
- Shared bathroom between 2 rooms
- Internet access - Per month \$25 (10GB); \$45 (50GB) (AUD approximate)
- Self-catering
- 5-7 minute bus to college; 20-minute walk
- Minimum stay is 12 months

## Bradford Lodge



- Greater level of independence within a secure student community
- Air-conditioning and small fridge in room
- Meals available onsite for a small cost
- Free Wifi access (6GB)
- Shared facilities including common kitchen, laundry and lounge area on each floor plus an internal bathroom between 2 rooms
- 5 – 7 minutes to college by bus; 20 minutes walk; 8 minutes bike ride.
- Minimum stay is 6 months
- Support for students under 18 years of age

## Highgate Lodge



- Greater level of independence and opportunity to mix with students from around the world
- Air-conditioning and small fridge in room
- Self-catering
- Free Wifi access (10GB)
- Shared facilities including common kitchen and laundry on each floor
- 2 large common rooms with televisions
- 15-20 minutes to college by bus
- Minimum stay is 6 months



# 2014 ACADEMIC CALENDAR

Orientation week is included in the dates below and runs the first week of a student's first semester.  
Please note: Dates are dependent on the University of Adelaide and may change.

## Foundation Studies Program

### Standard (FSP) 2014

|                               | February Intake           | July Intake               |
|-------------------------------|---------------------------|---------------------------|
| Semester 1                    | 10 Feb 2014 - 4 Jul 2014  | 28 Jul 2014 - 19 Dec 2014 |
| SWOT VAC/<br>Revision Classes | 16 Jun 2014 - 19 Jun 2014 | 1 Dec 2014 - 3 Dec 2014   |
| Exams                         | 20 Jun 2014 - 27 Jun 2014 | 4 Dec 2014 - 11 Dec 2014  |
| Semester 2                    | 28 Jul 2014 - 19 Dec 2014 | 9 Feb 2015 - 3 Jul 2015   |
| SWOT VAC/<br>Revision Classes | 1 Dec 2014 - 3 Dec 2014   | 15 Jun 2015 - 18 Jun 2015 |
| Exams                         | 4 Dec 2014 - 11 Dec 2014  | 19 Jun 2015 - 26 Jun 2015 |

### Accelerated (FSPX) 2014

|                               | October Intake            |
|-------------------------------|---------------------------|
| Semester 1                    | 20 Oct 2014 - 20 Feb 2015 |
| SWOT VAC/<br>Revision Classes | 9 Feb 2015 - 13 Feb 2015  |
| Exams                         | 16 Feb 2015 - 20 Feb 2015 |
| Semester 2                    | 23 Feb 2015 - 3 Jul 2015  |
| SWOT VAC/<br>Revision Classes | 15 Jun 2015 - 19 Jun 2015 |
| Exams                         | 22 Jun 2015 - 26 Jun 2015 |

### Standard (FSP) 2015

|                               | February Intake           |
|-------------------------------|---------------------------|
| Semester 1                    | 9 Feb 2015 - 3 Jul 2015   |
| SWOT VAC/<br>Revision Classes | 15 Jun 2015 - 18 Jun 2015 |
| Exams                         | 19 Jun 2015 - 26 Jun 2015 |
| Semester 2                    | 27 Jul 2015 - 18 Dec 2015 |
| SWOT VAC/<br>Revision Classes | 30 Nov 2015 - 2 Dec 2015  |
| Exams                         | 3 Dec 2015 - 10 Dec 2015  |

### Public Holidays

|           |                  |           |                  |           |                  |
|-----------|------------------|-----------|------------------|-----------|------------------|
| 01-Jan-14 | New Year         | 21-Apr-14 | Easter Monday    | 25-Dec-14 | Christmas Day    |
| 27-Jan-14 | Australia Day    | 25-Apr-14 | ANZAC Day        | 26-Dec-14 | Proclamation Day |
| 10-Mar-14 | Adelaide Cup Day | 09-Jun-14 | Queen's Birthday |           |                  |
| 18-Apr-14 | Good Friday      | 06-Oct-14 | Labour Day       |           |                  |

Bradford College will be closed from December 22nd 2014. Open again on January 5th 2015.

## Degree Transfer Program

### Extended (DTE)\* 2014

|                               | March Intake              | October Intake            |
|-------------------------------|---------------------------|---------------------------|
| Bridging Semester             | 17 Mar 2014 - 27 Jun 2014 | 27 Oct 2014 - 13 Feb 2015 |
| SWOT VAC/<br>Revision Classes | 16 Jun 2014 - 20 Jun 2014 | 2 Feb 2015 - 6 Feb 2015   |
| Exams                         | 23 Jun 2014 - 27 Jun 2014 | 9 Feb 2015 - 13 Feb 2015  |
| Semester 1                    | 21 Jul 2014 - 22 Nov 2014 | 23 Feb 2015 - 4 Jul 2015  |
| SWOT VAC                      | 3 Nov 2014 - 7 Nov 2014   | 15 Jun 2015 - 19 Jun 2015 |
| Exams                         | 8 Nov 2014 - 22 Nov 2014  | 20 Jun 2015 - 4 Jul 2015  |
| Semester 2                    | 23 Feb 2015 - 4 Jul 2015  | 20 Jul 2015 - 21 Nov 2015 |
| SWOT VAC/<br>Revision Classes | 15 Jun 2015 - 19 Jun 2015 | 2 Nov 2015 - 6 Nov 2015   |
| Exams                         | 20 Jun 2015 - 4 Jul 2015  | 7 Nov 2015 - 21 Nov 2015  |

### Standard (DTS)\* 2014

|                                | February Intake           | July Intake               |
|--------------------------------|---------------------------|---------------------------|
| Semester 1                     | 24 Feb 2014 - 5 Jul 2014  | 21 Jul 2014 - 22 Nov 2014 |
| SWOT VAC /<br>Revision Classes | 16 Jun 2014 - 20 Jun 2014 | 3 Nov 2014 - 7 Nov 2014   |
| Exams                          | 21 Jun 2014 - 5 Jul 2014  | 8 Nov 2014 - 22 Nov 2014  |
| Semester 2                     | 21 Jul 2014 - 22 Nov 2014 | 23 Feb 2015 - 4 Jul 2015  |
| SWOT VAC/<br>Revision Classes  | 3 Nov 2014 - 7 Nov 2014   | 15 Jun 2015 - 19 Jun 2015 |
| Exams                          | 8 Nov 2014 - 22 Nov 2014  | 20 Jun 2015 - 4 Jul 2015  |

### Accelerated (DTX)\* 2014

|                               | October Intake            |
|-------------------------------|---------------------------|
| Semester 1                    | 13 Oct 2014 - 9 Jan 2015  |
| SWOT VAC/<br>Revision Classes | 2 Jan 2015 - 2 Jan 2015   |
| Exams                         | 5 Jan 2015 - 9 Jan 2015   |
| Semester 2                    | 23 Feb 2015 - 4 Jul 2015  |
| SWOT VAC/<br>Revision Classes | 15 Jun 2015 - 19 Jun 2015 |
| Exams                         | 20 Jun 2015 - 4 Jul 2015  |

\*Please note: Dates are dependent on the University of Adelaide and may change. Students may need to remain in Adelaide after the end of semester for supplementary exams.





# 2014 DOMESTIC FEES & ENTRY REQUIREMENTS

All fees must be paid in full unless the student withdraws prior to commencement of the program. Please note that all fees stated are for 2014. For more information regarding fees and refunds please visit [www.bradford.adelaide.edu.au/fees](http://www.bradford.adelaide.edu.au/fees)

## Domestic Tuition Fees

| Program                    |                   | Stream   | Per semester (AUD) | Total (AUD) |
|----------------------------|-------------------|--|--------------------|-------------|
| Foundation Studies Program |                   | All  | \$7,450            | \$14,900    |
| Degree Transfer Program    | Extended (DTE)    | Commerce<br>Economics<br>Finance                             | \$7,200            | \$21,600    |
|                            |                   | Engineering<br>Computer Science<br>Science<br>Health Science | \$8,100            | \$24,300    |
|                            | Standard (DTS)    | Commerce<br>Economics<br>Finance                             | \$8,450            | \$16,900    |
|                            |                   | Engineering<br>Computer Science<br>Science<br>Health Science | \$9,150            | \$18,300    |
|                            | Accelerated (DTX) | Commerce<br>Economics  | \$7,600            | \$15,200    |

## Additional Fees

| Details   | Price (AUD) |
|---|-------------|
| Enrolment fee                                       | \$275       |
| Facilities Fee – University of Adelaide             | \$440       |
| Books and materials (depending on subjects studied) | \$500-700   |

## Academic Entry Requirements

| Program                    | Academic Entry Requirements  |                |
|----------------------------|------------------------------|----------------|
| Foundation Studies Program | Year 11 minimum of C average |                |
| Degree Transfer Program    | Extended (DTE)               | Year 12 (ATAR) |
|                            | Standard (DTS)               | Year 12 (ATAR) |
|                            | Accelerated (DTX)            | Year 12 (ATAR) |

All fees are in AUD and include GST where applicable. Prices are correct at the time of printing (December 2013) and are valid for programs starting in 2014. Bradford College has the right to change prices due to tax increases, governmental actions or other events beyond Bradford College's control. The fees stated above are for domestic students (Australian citizens and permanent residents only). They include tuition and other internal fees.

# 2014 INTERNATIONAL FEES & ENTRY REQUIREMENTS

All fees must be paid in full unless the student withdraws prior to commencement of the program. Please note that all fees stated are for 2014. For more information regarding fees and refunds please visit [www.bradford.adelaide.edu.au/fees](http://www.bradford.adelaide.edu.au/fees)

## International Tuition Fees

| Program                    | Price (AUD)  |  |             |          |
|----------------------------|--|--|-------------|----------|
| General Academic English   | \$380 per week<br>Students who need extra language support prior to their Foundation Studies or Degree Transfer program should complete the required number of weeks. Please refer to page 19. |  |             |          |
| Program                    | Stream   | Per semester (AUD)   | Total (AUD) |          |
| Foundation Studies Program | All  | \$11,110   | \$22,220    |          |
| Degree Transfer Program    | Extended (DTE)   | Commerce<br>Economics<br>Finance                             | \$10,750    | \$32,250 |
|                            |  | Engineering<br>Computer Science<br>Science<br>Health Science | \$12,120    | \$36,360 |
|                            | Standard (DTS)   | Commerce<br>Economics<br>Finance                             | \$12,620    | \$25,240 |
|                            |  | Engineering<br>Computer Science<br>Science<br>Health Science | \$13,650    | \$27,300 |
|                            | Accelerated (DTX)  | Commerce<br>Economics  | \$11,330    | \$22,660 |

## Additional Fees

| Details   | Price (AUD) |
|---|-------------|
| Enrolment fee                                       | \$275       |
| Overseas Student Health Cover*                      | \$495       |
| Facilities Fee – University of Adelaide             | \$440       |
| Books and materials (depending on subjects studied) | \$500-700   |

\*Overseas Student Health Cover (OSHC) is mandatory for Student Visa holders and their accompanying family members. AUD 495 per year is provided as a guide price, costs can vary by supplier. OSHC fees are reviewed annually. Students may organise their own Overseas Student Health Cover or request that Bradford arrange on their behalf.

Students moving to Adelaide to study should also consider the following costs:

| Details                      | Price (AUD)   |                 |
|------------------------------|---|-----------------|
| Accommodation placement      | \$270   |                 |
| Airport pick-up              | \$125   |                 |
| Homestay Accommodation       | Full Board (includes 3 meals/day for 7 days + laundry)  | \$250 per week  |
|                              | Part Board (accommodation only)   | \$155 per week  |
|                              | Unlimited wireless broadband Internet (approximate)   | \$5.00 per week |
| Student Hostel Accommodation | Bradford Lodge  | \$190 per week  |
|                              | Highgate Lodge  | \$160 per week  |
|                              | University of Adelaide Village<br>Options vary, application subject to approval.<br>Price on request. |                 |

The costs in the above table are provided as a guide only and are subject to change. These costs may be incurred only if required by students.

All fees are in AUD and include GST where applicable. Prices are correct at the time of printing (December 2013) and are valid for programs starting in 2014. Bradford College has the right to change prices due to tax increases, governmental actions or other events beyond Bradford College's control. The fees stated above are for international students. They include tuition and other internal fees.



## Academic Entry Requirements

| Country              | Foundation Studies Program   | Degree Transfer Program  |
|----------------------|--|--|
| Britain              | GCSE Level a minimum of 'C' average  | <b>GCE A Levels</b><br>DTE - minimum 2 'E' grades<br>DTS - minimum 1 'D' and 1 'E' grades<br>DTX - minimum 2 'D' grades  |
| China                | High School Certificate SM2 75%  | <b>SM3</b><br>DTE - 75%; DTS - 80%; DTX - 85%  |
| Hong Kong            | HK Form 5 – Average 40% or 50% dependent on pass mark  | <b>HKDSE</b><br>DTE - 10 points over best 5 subjects<br>DTS - 12 points over best 5 subjects<br>DTX - 13 points over best 5 subjects<br>Associate Degree or equivalent accepted  |
| India                | Grade XI a minimum overall average of 60%  | Indian School Certificate (ISC), Central Board of Secondary Education (CBSE) and Indian State Board Exam results considered, please enquire  |
| Indonesia            | SMU 2 with avg. grade of 7.2 in academic subjects, SMU 3   | SMU 3 with an avg. grade of 7.0 in 4 academic subjects   |
| Malaysia             | SPM 6 passes minimum 'C' average (SPM forecast results accepted), UEC, SM2 - 75% (forecast results accepted) | <b>UEC (forecast results accepted)</b><br>DTE - 35 points or less (best 5 subjects)<br>DTS - 30 points or less (best 5 subjects)<br>DTX - 28 points or less (best 5 subjects)<br>STPM accepted (forecast results accepted) |
| Singapore            | GCE O Levels minimum of 'C' average in 5 subjects (forecast results accepted)                                | <b>GCE A Levels (forecast results accepted)</b><br>DTE - minimum 2 'E' grades<br>DTS - minimum 1 'D' and 1 'E' grades<br>DTX - minimum 2 'D' grades<br>UEC accepted  |
| Sri Lanka            | GCE O Levels minimum of 'C' average in 5 subjects  | <b>GCE A Levels</b><br>DTE - minimum 2 'E' grades<br>DTS - minimum 1 'D' and 1 'E' grades<br>DTX - minimum 2 'D' grades  |
| South Korea          | Senior High School Year 2 or 3, a minimum overall average of 70%   | Senior High School Certificate   |
| Vietnam              | Year 11, GPA 6.5 or above  | DTE - Year 12, GPA 6.5 or above<br>DTS - Year 12, GPA 7.0 or above<br>DTX - Year 12, GPA 7.2 or above  |
| All other countries  | Please enquire   | Please enquire   |
| United Arab Emirates | Secondary School Certificate, a minimum overall average of 60% in the best 4 academic subjects               | Please enquire   |

HKDSE Scoring System - Level 5\*\*, 5\*, 5 = 5 points; Level 4 = 4 points; Level 3 = 3 point; Level 2 = 2 points; Level 1 = 1 point.

Academic assessment is based on the grades a student achieves in individual subjects, as well as an aggregate grade.

Only academic subjects will be considered, not subjects such as religious studies, ethics or physical education and academic transcripts must be produced upon request.

## English Entry Requirements

| Program                    | English Entry Requirements |  |  |                         |
|----------------------------|----------------------------|--|--|-------------------------|
|                            |                            | IELTS  | iBT TOEFL                                      | Pearson Test of English |
| Foundation Studies Program |                            | IELTS 5.5 overall (all bands 5.0 or above)                               | 50 overall (15 or above in Speaking & Writing) | 46                      |
| Degree Transfer Program    | Extended (DTE)             | IELTS 5.5 overall (all bands 5.0 or above) or equivalent                 | 50 overall (15 or above in Speaking & Writing) | 46                      |
|                            | Standard (DTS)             | IELTS 5.5 overall (Speaking and Writing band 5.5 or above) or equivalent | 50 overall (16 or above in Speaking & Writing) | 48                      |
|                            | Accelerated (DTX)          | IELTS 6.0 overall (all bands 5.5 or above) or equivalent                 | 57 overall (17 or above in Speaking & Writing) | 50                      |

Please refer to page 19 for more information on recommended study durations. The above is a guide only. If in doubt, please contact the College or the College's educational representative.

# Accommodation Application Form

Please print clearly in English and in BLOCK letters. Tick boxes where appropriate.

## Representative information

|                             |                         |
|-----------------------------|-------------------------|
| Representative name         |                         |
| Representative company name |                         |
| City                        | Telephone (home/mobile) |
| E-mail                      |                         |

## Student information (Compulsory)

|   |  |
|---|--|
| Title<br><input type="checkbox"/> Mr <input type="checkbox"/> Ms <input type="checkbox"/> Other | <input type="checkbox"/> Male<br><input type="checkbox"/> Female |
| Family name   |  |
| First name(s)   |  |
| Preferred English name  |  |
| Date of birth (d/m/y)   |  |
| Country of birth  |  |
| E-mail  |  |

## Airport pickup

|   |
|---|
| Do you require airport pickup? <input type="checkbox"/> Yes <input type="checkbox"/> No |
| Airline   |
| Flight number   |
| Arrival date  |
| Arrival time  |

## Accommodation preference

Please give your preferred choice of accommodation here

|  |   |
|--|---|
| <b>Student hostels</b><br><input type="checkbox"/> Bradford Lodge<br><input type="checkbox"/> Highgate Lodge<br><input type="checkbox"/> Torrens Valley International Residence<br><input type="checkbox"/> University Village | <b>Homestays</b><br><input type="checkbox"/> Full board<br>(accommodation, meals supplied -<br>3 meals a day x 7 days and washing )<br><input type="checkbox"/> Part board (accommodation only) |
|--|---|

## Student profile

|  |
|--|
| Do you have any illness or medical allergies? <input type="checkbox"/> Yes <input type="checkbox"/> No   |
| Do you have any special requests?<br>(e.g. I do not like eating fish or lamb, I am a vegetarian, I am allergic to peanuts)<br><input type="checkbox"/> Yes <input type="checkbox"/> No If yes, please specify:   |
| Do you have any other special requirements?<br>(e.g. I am allergic to penicillin)<br><input type="checkbox"/> Yes <input type="checkbox"/> No If yes, please specify:  |
| Do you smoke? <input type="checkbox"/> Yes <input type="checkbox"/> No   |
| Is it ok if you live in a smoking household? <input type="checkbox"/> Yes <input type="checkbox"/> No  |
| Do you like animals? <input type="checkbox"/> Yes <input type="checkbox"/> No  |
| Are you allergic to animals? <input type="checkbox"/> Yes <input type="checkbox"/> No If yes, please specify:  |
| Are you happy to live with overseas students? <input type="checkbox"/> Yes <input type="checkbox"/> No   |
| Please tell us about yourself, your family and your interests: (e.g. I like soccer, table tennis, playing the piano and swimming. I am talkative or I am quiet and shy. I want to learn more about Australian culture etc.)  |
| What kind of family would make you feel comfortable? (e.g. I'd like to be with a close family who will let me be independent and give me space. Young couple/older couple/ Single person; no children/with children. I will stay long term if right family/I already have friends here, I just want initial help when I arrive before I live with my own friends.) |

For further information regarding accommodation and/or airport pickup, please contact:  
 Debbie Armstrong - Manager Student Services - Accommodation & Administration  
 Mobile: +61 (0)4 0080 7815  
 Email: [debbie.armstrong@adelaide.edu.au](mailto:debbie.armstrong@adelaide.edu.au)  
 Please note—we can not guarantee the availability of your first hostel or homestay choice.  
 The college will keep in close contact with you regarding the arrangements and confirm your booking as soon as possible.





# Application Form

Please print clearly in English and in BLOCK letters. Tick boxes where appropriate.

International Student Application       Domestic Student Application

## Representative information

|                                   |                         |
|-----------------------------------|-------------------------|
| Representative name (if relevant) |                         |
| City                              | Telephone (home/mobile) |
| E-mail                            |                         |
| Representative signature:         |                         |

## Student information (Compulsory)

|  |                           |  |
|--|---------------------------|--|
| Title<br><input type="checkbox"/> Mr <input type="checkbox"/> Ms <input type="checkbox"/> Other  |                           | <input type="checkbox"/> Male<br><input type="checkbox"/> Female |
| Family name  |                           |  |
| First name(s)  |                           |  |
| Date of birth (d/m/y)  |                           |  |
| Country of birth   |                           |  |
| Country of citizenship   |                           |  |
| First language   |                           |  |
| Visa type (if relevant)  | Visa number (if relevant) |  |
| Permanent address*   |                           |  |
| City   |                           |  |
| State/province   | Postcode                  |  |
| Country  |                           |  |
| Telephone (home/mobile)  |                           |  |
| E-mail   |                           |  |
| Passport number (if available)   | Expiry date               |  |
| Do you hold Permanent Residency or a current Australian Visa?<br><input type="checkbox"/> Yes <input type="checkbox"/> No <input type="checkbox"/> N/A |                           |  |
| If yes, please provide a copy of your PR or current Australian visa.   |                           |  |

\*Your permanent/home country address is required by the Australian Government. If it is not supplied your application cannot be processed.

## Parent/Legal Guardian details

|  |  |  |
|--|--|--|
| Title<br><input type="checkbox"/> Mr <input type="checkbox"/> Mrs <input type="checkbox"/> Other |  | <input type="checkbox"/> Male<br><input type="checkbox"/> Female |
| Family name  |  |  |
| First name(s)  |  |  |
| Relationship to student (i.e mother or father)   |  |  |
| Permanent address of Parent or Guardian (if different from above)                                |  |  |
| E-mail   |  |  |
| Telephone (home/mobile)  |  |  |

## Education history

If you are currently completing a qualification, please indicate when you expect to complete this study (month/year)

|   |
|---|
| Name & location of institution (e.g. Temasek Junior College, Singapore) |
| Qualification/Award received (e.g. GCE "A" level)                       |
| Years attended (e.g. 2010-2012)   |
| Name & location of institution  |
| Qualification/Award received  |
| Years attended  |
| Name & location of institution  |
| Qualification/Award received  |
| Years attended  |

## Current English proficiency

|  |  |                                |
|--|--|--------------------------------|
| Is English your first language? <input type="checkbox"/> Yes <input type="checkbox"/> No   |  |                                |
| Have you studied at secondary level with English as the language of instruction?<br><input type="checkbox"/> Yes <input type="checkbox"/> No |  |                                |
| If yes, please provide evidence of language of instruction.  |  |                                |
| Do you have an English language score?<br><input type="checkbox"/> Yes<br><input type="checkbox"/> No  | If yes, please select one of the following<br><input type="checkbox"/> IELTS<br><input type="checkbox"/> TOEFL<br><input type="checkbox"/> iBT TOEFL<br><input type="checkbox"/> Pearson Test of English<br><input type="checkbox"/> Other | Test date (d/m/y)<br><br>Score |

## Program selection

|  |   |
|--|---|
| Degree Transfer<br><input type="checkbox"/> Degree Transfer Extended (March)<br><input type="checkbox"/> Degree Transfer Extended (October)<br><input type="checkbox"/> Degree Transfer Standard (February)<br><input type="checkbox"/> Degree Transfer Standard (July)<br><input type="checkbox"/> Degree Transfer Accelerated (October only) | Foundation Studies<br><input type="checkbox"/> Foundation Studies (February)<br><input type="checkbox"/> Foundation Studies (July)<br><input type="checkbox"/> Foundation Studies Accelerated (October only)<br>General Academic English<br><input type="checkbox"/> General Academic English |
| Year of entry: (e.g. 2014)   |   |
| University Program<br>Please indicate which Bachelor program you intend to study at the University of Adelaide (e.g. Bachelor of Engineering [Civil and Structural]) Bachelor of:  |   |

## Accommodation

Please give your preferred choice of accommodation here (if required)

|  |                       |                        |
|--|-----------------------|------------------------|
| Accommodation type<br><input type="checkbox"/> Homestay<br><input type="checkbox"/> Hostel<br><input type="checkbox"/> University Accommodation  | Check-in date (d/m/y) | Check-out date (d/m/y) |
| Accommodation name   |                       |                        |
| Do you have any special requests (e.g. medical requirements, allergies, special diet, no cats/dogs, meals, supplements)?<br><input type="checkbox"/> Yes <input type="checkbox"/> No   If yes, please specify: |                       |                        |
| Do you smoke? <input type="checkbox"/> Yes <input type="checkbox"/> No   |                       |                        |

Form continues overleaf.

## Additional services

Do you wish Bradford College to organise your Overseas Student Health Cover (OSHC)\* on your behalf?  Yes  No

If yes, please indicate:  Single  Couples  Family

If no, please list your current OSHC details.

Policy provider:

Policy number: \_\_\_\_\_ Start date: \_\_\_\_\_ Expiry date: \_\_\_\_\_

\*Please note that OSHC is mandatory for Student Visa holders and their accompanying family members.

## Medical conditions

Do you have a disability, impairment or long-term medical condition which may affect your studies?  Yes  No

If yes, please provide medical documentation from a relevant treating professional detailing the impact of your condition on your ability to meet academic demands. Disclosure will not disadvantage your application and is confidential. The information you provide will assist us in best catering for your needs.

## Application checklist

Completed all sections of the Application Form

Read and understood the Terms and Conditions

Attached certified copies of your academic qualifications (translated into English). If waiting for results then these can be submitted at a later date

Attached evidence of English language proficiency (if available)

Included a copy of your passport (if available)

## Declaration

I have read, understood and agree to be bound by the Terms and Conditions of enrolment. I declare that I have read the instructions on this application form and that, to the best of my knowledge, the information provided by me is true and complete in every particular. I acknowledge that Bradford College and the University of Adelaide may vary or reverse any decision regarding admission or enrolment made on the basis of incorrect or incomplete information provided by me. I give permission to Bradford College to verify or obtain records from other educational institutions that I have attended. I understand that I am seeking temporary entry into Australia for educational purposes only as a fee-paying student. I understand that if I change my visa status, I may be subject to different rules and conditions. I understand the above conditions and am prepared to accept them in full. In particular that I, or my sponsor, will be responsible for the full costs of the academic program for which I am seeking admission, as well as the associated travel and living costs. I give permission to Bradford College to provide information to my parent(s) or guardian(s) and my agent regarding my application for admission to the program listed above.

I confirm that I have read, understood and agree to be bound by the Bradford College Terms and Conditions to include the full declaration detailed on page 35.

|  |      |
|--|------|
| Signature of student   | Date |
| Signature of parent/guardian (required if student is under 18 years old) | Date |

## How to apply

- Fill out the application form (also available at [www.bradford.adelaide.edu.au/apply](http://www.bradford.adelaide.edu.au/apply))
  - Provide certified copies of:
    - Academic qualifications (school reports)
    - English proficiency document
    - Passport
    - Birth certificate (Domestic students only)
  - Send your completed application form and certified documents by post or email to Bradford College at the address below or to one of our local representatives
  - We will review your application form and supporting documents. If you are accepted, you will receive a 'Letter of Offer'
  - Sign and return the written acceptance of your offer to the Bradford College Admissions Office together with evidence of payment for the amount specified in the Letter of Offer (Payment options listed in Letter of Offer)
- Account Name: Bradford College
- Bank: HSBC Bank Australia Limited  
28 Bridge Street,  
Sydney, NSW 2000
- BSB: 342 011
- Account Number: 461456 163
- SWIFT Code: HKBAU2S
- You will then receive an electronic Confirmation of Enrolment
  - International students may then apply for a student visa to study in Australia

## Admissions Office Bradford College

132 Grenfell St, Adelaide, SA 5000  
Telephone: +61 8313 3430  
Fax: +618 8313 3877  
[bradford@adelaide.edu.au](mailto:bradford@adelaide.edu.au)

## Further information

For more information about College programs or application procedures, contact Bradford College or a registered representative.

## Scholarships

Scholarships are usually available to Bradford College students with excellent academic grades; both for entry to the College and on progression to the University. Ask your Bradford College representative for more information.





# Terms & Conditions

## 1. GENERAL TERMS & CONDITIONS

These Terms & Conditions are applicable to all students studying at Bradford College (Bradford).

1.1. Policies and Procedures: All Bradford students are subject to the policies and procedures of Bradford as published on our website ([www.bradford.adelaide.edu.au](http://www.bradford.adelaide.edu.au)) and in the Bradford student handbook, including those dealing with student misconduct, assessment, progression, complaints and appeals. Students must review these policies and procedures, and ensure they understand and comply with the most up to date version of our policies and procedures.

1.2. Late Arrivals, Vacations & Absences: No refund is given for time missed due to late arrivals, vacations, absences or public holidays. Periods of absence will not be replaced by a free extension of any course. No refunds or substitutions will be made for classes missed due to exams, excursions, first day orientation or other obligations that fall outside the normal schedule. Classes are not held, and many campus facilities are closed, on public holidays. All published course dates start on a Monday, but if the Monday is a public holiday, the course start will fall on the Tuesday. Students may be given written permission for late arrival up to 2 weeks from their course commencement date.

1.3. Campus facilities: Students are advised that campus facilities may not be available during study breaks. Details are available from Student Services Team/Reception.

1.4. Placement: Bradford reserves the right to place a student into the most appropriate class, and to postpone subjects to the following semester where there are an insufficient number of students for that subject.

1.5. Course changes: Bradford has the right to change course dates, course curricula, tutors and programs at any time at its discretion. However, in cases where the course is rescheduled prior to the start of the first course and the new date is unacceptable to the student, all unused tuition fees will be refunded.

1.6. Tuition fees: The student or student's family agrees to pay the annual tuition fee and any additional charges in accordance with the fee schedule available on our website [www.bradford.adelaide.edu.au](http://www.bradford.adelaide.edu.au). Any refund is made in accordance with the Bradford refund policy. Tuition fees include lessons, orientation, use of computer facilities and internet quota, placement and progress testing and a Bradford certificate upon successful completion of the course. Bradford reserves the right to withhold the granting of a certificate attained by a student if tuition fees or any other fees remain outstanding. All fees are published on our website [www.bradford.adelaide.edu.au](http://www.bradford.adelaide.edu.au) and tuition fees can be found in the 2014 Fee Schedules.

1.7. Late payment: A fee of AUD 100 applies on unpaid accounts 30 days after the date the payment was due.

1.8. Books and learning materials: Students may be required to purchase textbooks, workbooks, stationery, software and other required learning materials at an additional cost.

1.9. Additional services: Any additional services (such as travel, telephone costs, excursions, medical costs, special diet, non-Bradford exams and enrolment amendments) are not included in any fees unless specifically stated on a valid invoice. Students who wish to arrange homestay accommodation and/or airport transfer please refer to [www.bradford.adelaide.edu.au/accommodation](http://www.bradford.adelaide.edu.au/accommodation)

1.10. Privacy: Information collected by Bradford, which personally identifies a student and information regarding a student's course progress and attendance may be shared with the Australian State and Federal governments, designated authorities, the Tuition Protection Scheme, the agent that recruited the student (unless specifically excluded), the students' parents (if under 18), Bradford staff, University of Adelaide and related body corporates of Bradford. This information may include personal and contact details, course enrolment details, changes and results, and circumstances of any suspected breach by the student of any visa condition. Bradford's Privacy Policy complies with the Privacy Act when dealing with personal information. For further information please contact the Privacy Officer at [privacy@kaplan.edu.au](mailto:privacy@kaplan.edu.au)

1.11. Medical Costs: Bradford is hereby authorised to seek medical treatment should Bradford or a staff member acting on behalf of Bradford consider such action necessary for a student. The student agrees to indemnify Bradford for any expense, loss, damage or liability of whatsoever nature occasioned as a result of authorising and arranging such emergency medical treatment.

## 2. UNIVERSITY OF ADELAIDE FEES

2.1. University of Adelaide course fees will depend on the student's choice of undergraduate degree course and point of entry. Further information is available on the University of Adelaide website: [www.adelaide.edu.au](http://www.adelaide.edu.au)

## 3. DEFERRAL POLICY

3.1. A student may apply to defer their studies on the grounds of exceptional circumstances such as their own ill health or that of a very close relative. All applications for deferral from a course of study must be made in writing or using the Deferral Form available from Bradford. Students should refer to our deferral policy on our website for details of circumstances in which their enrolment may be deferred, suspended or cancelled prior to submitting their application. The deferral policy can be accessed at [www.bradford.adelaide.edu.au/policies](http://www.bradford.adelaide.edu.au/policies). An administration fee of AUD 250 is required for processing a deferral application.

## 4. REFUND POLICY

4.1. Bradford's refund policy is available at [www.bradford.adelaide.edu.au/policies](http://www.bradford.adelaide.edu.au/policies)

All students must read the refund policy prior to accepting an offer of admission from Bradford. Students requesting a refund are required to do so in writing. Refunds, where applicable, will be made only to the bank details specified in the refund form. (The refund form will be available from reception desk). All refund requests will be responded to in writing, and approved refunds will be paid within 14 days of written notification.

4.2. In all cases, enrolment fee, medical insurance/health cover (to date), accommodation placement fee (if the accommodation has already been arranged), courier and any other service fees are non-refundable. Tuition fees are not transferable to other students.

4.3. Where a student visa application is rejected, all tuition fees paid will be refunded in full, less an administration fee of AUD 240, once proof of refusal has been shown.

If a student visa holder withdraws from the course, the cancellation fee, which depends upon the notification period, is as follows (for the purposes of the Refund Policy only, a course is defined as one semester of study, or for English programs, 24 weeks of study):

Full tuition fee refunds are payable if:

- Bradford is unable to provide the academic course offered before classes are due to commence

- The offer of enrolment is withdrawn for reasons other than incorrect or incomplete information supplied by the student at time of enrolment

- An Australian visa application is refused, or

- Approval of an Australian student visa is delayed beyond the student's control.

Partial tuition fee refunds are payable in the following manner:

- 90% of the tuition fee is refundable when the offer of enrolment is withdrawn because of incorrect or incomplete information supplied by the student at the time of enrolment

- 80% of the tuition fee is refundable when the student notifies the College of their decision not to enrol at least 4 weeks prior to the commencement of the course

- 50% of the tuition fee is refundable when the student notifies the College of their decision not to enrol less than 4 weeks prior to the commencement of the course.

No tuition fee refund is payable if:

- Bradford receives cancellation after the commencement date of the student's course

- The student withdraws after commencing the course

In this case the student is liable to pay the full tuition fee of the first semester and any expenses, costs or disbursements incurred in recovering the tuition fee

- These Terms and Conditions are breached by the student, or

- The student's enrolment is cancelled by Bradford.

If Bradford has to cancel an international student's enrolment due to a serious breach of student visa conditions or serious misconduct, no refund of course fees will apply.

In the unlikely event that Bradford is unable to deliver a course in full, after classes have commenced, students will be offered a refund of all unspent prepaid tuition fees. The refund will be paid within 14 days of the day on which the course ceased being provided. Alternatively, students may be offered enrolment in an alternative course by Bradford at no extra cost. Students have the right to choose whether they would prefer a refund of unspent prepaid tuition fees or to accept a place in another course. If they choose placement in another course, students will need to sign documentation to indicate their acceptance of the placement.

In the unlikely event that Bradford is unable to provide a refund or place a student in an alternative course, the Tuition Protection Service will assist a student in finding an alternative course or to get a refund if a suitable alternative is not found.

4.4. Students who terminate their course may not be eligible to receive a certificate for a partially completed course.

## 5. INTERNATIONAL STUDENTS

5.1. Visa information: It is the responsibility of the student to arrange all applicable travel permits or visas and to have a valid passport and leave to remain for the whole period of study. The student may be asked to make payment for the first study period prior to the issuing of any of the visa documentation. Visa application forms (Confirmation of Enrolment) may not be issued by Bradford until payment for the first study period has been received and the enrolment agreement has been signed and returned. The enrolment agreement includes reference to the pre-arrival information and grievance procedures information and can be found on our website [www.bradford.adelaide.edu.au](http://www.bradford.adelaide.edu.au)

5.2. Student Visa: Student visa holders are required to provide Bradford with a current residential address and telephone number at all times, maintain satisfactory academic progress and attend a minimum of 80% of their course. Students who fail to commence their enrolled course or fail to meet the requirement for 80% attendance or satisfactory academic progress will be reported to the Department of Immigration and Border Protection (DIBP). Any school-aged dependants accompanying overseas students to

Australia will be required to pay full fees if they are enrolled in either a government or non-government school.

5.3. Health insurance: Health insurance is compulsory for student visa holders and their accompanying family members. Students are required to show proof of health insurance at the time of their enrolment. Students will not receive Confirmation of Enrolment until they have obtained satisfactory health insurance for the length of their visa. The Australian government requires all students on student visas to join the Overseas Student Health Cover (OSHC) scheme, a health insurance plan for overseas students in Australia. Students must ensure that payment is made for compulsory OSHC before their visa is issued and that the insurance provides adequate coverage for the duration of the student's visa.

5.4. Codes of practice: Bradford abides by the National Code of Practice for Registration Authorities and Providers of Education and Training to Overseas Students (the National Code) and the Educational Services for Overseas Students Act 2000 (ESOS Act).

For more information about the National Code please see <https://aei.gov.au/Regulatory-Information/Education-Services-for-Overseas-Students-ESOS-Legislative-Framework/National-Code/Pages/default.aspx>

5.5. Living Expenses: Migration regulations in Australia require international students to show evidence that they can contribute to the cost of living and studying in Australia. For more information please refer to [www.studyinaustralia.gov.au/en/Study-Costs](http://www.studyinaustralia.gov.au/en/Study-Costs) or [www.immi.gov.au](http://www.immi.gov.au)

## 6. CONSUMER PROTECTION

6.1. Agreement to these Terms and Conditions, and the availability of complaints and appeals processes, does not remove the right of the student to take action under Australia's consumer protection laws, or their right to pursue other legal remedies under Australian law.

6.2. Students will be advised of any changes to these Terms and Conditions that may result from a directive of the Governing Body of Bradford or government legislation, at the time of application. Any dispute, claim or other matter arising will be subject to the laws of South Australia.

## 7. DECLARATION

Upon submitting an application to Bradford, the student:

7.1. Declares that the information provided in their application form is true and complete in every detail.

7.2. Understands that giving false or incomplete information may lead to the refusal of their application or cancellation of enrolment.

7.3. Has read and understood the published information in the Bradford brochure and on the Bradford website and has sufficient information about Bradford to enrol.

7.4. Authorises Bradford to retain their photo image for identification purposes.

7.5. Authorises Bradford to provide the University of Adelaide, or any other educational institutions to which the student is seeking admission, any required relevant official records. The student also gives Bradford permission to obtain official records from any educational institution the student has attended and from the University of Adelaide once their studies at Bradford have finished.

7.6. For international students, the student understands that Bradford will collect information during their enrolment in order to meet its obligations under the ESOS Act and the National Code, to ensure the student complies with the conditions of their visa and the student's obligations under Australian immigration laws. The authority to collect information is contained in the ESOS Act, ESOS Regulations and the National Code. The international student authorises Bradford to provide information including personal and contact details, course enrolment details, and the circumstances of any suspected breach of their student visa conditions to the Australian Government, the Tuition Protection Service (if relevant) and any other designated authorities. The student also understands that this information can be disclosed without their consent where Bradford is authorised to or required to by law.

7.7. Understands that information collected during their enrolment may be stored on a server controlled by a third party whether in Australia or otherwise.

7.8. Accepts liability for payment of all fees as explained in the Bradford brochure and on the Bradford website, and agrees to abide by the Bradford Refund Policy. The student also understands that fees may rise. For international students, the student has also read the section relating to living expenses and they understand that the cost of living in Australia may be higher than in their own country, and the student confirms that they can meet those costs.

7.9. Agrees to notify Bradford of their change of address within 7 days of moving.

## REFERENCE

The following websites may be of use for international students:

Education Services for Overseas Students (ESOS): [www.aei.gov.au](http://www.aei.gov.au)

Australian Quarantine & Inspection Service: [www.daff.gov.au/aqis](http://www.daff.gov.au/aqis)

Australian Department of Foreign Affairs & Trade: [www.dfat.gov.au](http://www.dfat.gov.au)

Department of Immigration & Border Protection: [www.immi.gov.au](http://www.immi.gov.au)

The Bureau of Meteorology: [www.bom.gov.au](http://www.bom.gov.au)

Overseas Student Ombudsman: [www.oso.gov.au](http://www.oso.gov.au)



**Bradford College**

132 Grenfell Street  
Adelaide SA 5000  
Australia

**Telephone:** +61 (0)8 8313 3430  
**Facsimile:** +61 (0)8 8313 3877  
bradford@adelaide.edu.au  
www.bradford.adelaide.edu.au

**Part of Kaplan, a leading global education provider.**

Kaplan Business School Pty Ltd. ABN 86 098 181 947,  
trading as Bradford College.

The Bradford English Language programs are delivered  
under the registered entity Kaplan Business School Pty  
Ltd. CRICOS Provider Code 02426B

Foundation Studies and Degree Transfer  
programs are delivered under agreement with  
The University of Adelaide CRICOS Provider Code  
00123M



**University Affiliation**

Bradford College is proud to be affiliated  
with the University of Adelaide.

The University of Adelaide  
CRICOS Provider Code 00123M

Supporting Australian education in association with

