

Bradford College

YOUR PATHWAY TO THE UNIVERSITY OF ADELAIDE



WHY CHOOSE US?

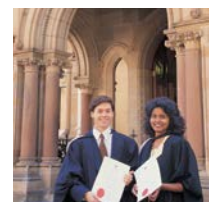
Bradford College is dedicated to providing our students with an education that thoroughly prepares them for success at university. The partnership between the University of Adelaide and Bradford College offers a special opportunity to study on campus and adjust to campus life before you begin your undergraduate studies.

Bradford College provides you with a learning environment where you are respected, guided and encouraged to reach your maximum potential and achieve your goal of entering the University of Adelaide well prepared to face the challenges of undergraduate life. Our highly professional and caring teachers support the students in their learning in an open and friendly environment. We look forward to welcoming you to the College.

Andrew Foley
Campus Director
Bradford College

Your pathway to success?

- Pathways to Year 1 or Year 2 undergraduate studies
- Choose from 3 intakes per year
- Enjoy a supportive study environment
- Access academic and recreational facilities on campus
- Pre-sessional English available





Qilin Yang, China
Pathway to Architecture Design

"Its totally different here, I now know what to expect at university"

My experience has been interesting and exciting. I have learnt a lot and I like the easy communication between students and teachers in class; it introduces new knowledge in an understandable way.

UNIVERSITY PROGRAM GUIDE 2015

Choose from the wide range of degrees on offer at the University of Adelaide. Students may choose a progression pathway from Bradford College to suit their unique needs and aspirations.



Bachelor Programs	Duration (years)	Foundation Studies Program Intakes			Degree Transfer Program Intakes				
		Standard		Accelerated	Extended		Standard		Accelerated
		February	July	October	March	October	February	July	October
B Agricultural Sciences	3	•	•	•					
B Architectural Design	3	•	•	•					
B Arts	3	•	•	•					
B Commerce	3	•	•	•	•	•	•	•	•
B Commerce (Accounting)	3	•	•	•	•	•	•	•	•
B Commerce (Corporate Finance)	3	•	•	•	•	•	•	•	•
B Commerce (International Business)	3	•	•	•	•	•	•	•	•
B Commerce (Management)	3	•	•	•	•	•	•	•	•
B Commerce (Marketing)	3	•	•	•	•	•	•	•	•
B Computer Science	3	•	•	•	•	•	•	•	
B Dental Surgery	5	•*							
B Development Studies	3	•	•	•					
B Economics	3	•	•	•	•	•	•	•	•
B Engineering (Honours)(Architectural)	4	•							
B Engineering (Honours)(Chemical)	4	•	•	•					
B Engineering (Honours)(Chemical-Minerals Processing)	4	•	•	•					
B Engineering (Honours)(Chemical-Sustainable Energy)	4	•	•	•					
B Engineering (Honours)(Civil and Environmental)	4	•	•	•					
B Engineering (Honours)(Civil and Structural)	4	•	•	•	•	•	•	•	
B Engineering (Honours)(Computer Systems)	4	•	•	•	•	•	•	•	

Bachelor Programs	Duration (years)	Foundation Studies Program Intakes			Degree Transfer Program Intakes				
		Standard		Accelerated	Extended		Standard		Accelerated
		February	July	October	March	October	February	July	October
B Engineering (Honours)(Electrical and Electronic)	4	•	•	•	•	•	•	•	
B Engineering (Honours) (Electrical and Sustainable Energy)	4	•	•	•	•	•	•	•	
B Engineering (Honours)(Mechanical)	4	•	•	•	•	•	•	•	
B Engineering (Honours)(Mechanical and Aerospace)	4	•	•	•	•	•	•	•	
B Engineering (Honours)(Mechanical and Sports)	4	•	•	•	•	•	•	•	
B Engineering (Honours) (Mechanical and Sustainable Energy)	4	•	•	•	•	•	•	•	
B Engineering (Honours)(Mechatronic)	4	•	•	•	•	•	•	•	
B Engineering (Honours)(Mining)	4	•	•	•					
B Engineering (Honours)(Petroleum)	4	•	•	•					
B Engineering (Honours)(Pharmaceutical)	4	•	•	•	•	•	•	•	
B Engineering (Honours)(Software)	4	•	•	•	•	•	•	•	
B Engineering (Honours)(Telecommunications)	4	•	•	•	•	•	•	•	
B Environmental Policy and Management	3	•	•	•					
B Finance	3	•	•	•	•	•	•	•	
B Finance (International)	3	•	•	•	•	•	•	•	
B Food and Nutrition Science	3	•							
B Health Sciences	3	•	•	•	•	•	•	•	
B Innovation and Entrepreneurship	3	•	•	•	•	•	•	•	•
B International Studies	3	•	•	•					
B Languages	3	•*							
B Laws	4	•							
B Mathematical and Computer Sciences	3	•	•	•	•	•	•	•	
B Mathematical Sciences	3	•	•	•					
B Media	3	•	•	•					
B Medicine and Surgery	6	•*							
B Music	3	•*							
B Nursing	3	•*							
B Oral Health	3	•*							
B Psychological Science	3	•							
B Science	3	•	•	•	•**	•	•	•**	
B Science (Animal Science)	3	•							
B Science (Biomedical Science)	3	•	•	•	•	•	•	•	
B Science (Biotechnology)	3	•	•	•					
B Science (Evolutionary Biology)	3	•				•	•		
B Science (Laser Physics and Technology)	3	•				•	•		
B Science (Marine Biology)	3	•	•	•					
B Science (Mineral Geoscience)	3	•	•	•					
B Science (Molecular and Drug Design)	3	•	•	•	•	•	•	•	
B Science (Molecular Biology)	3	•				•	•		
B Science (Nanoscience and Materials)	3	•				•	•		
B Science (Natural Resources)	3	•	•	•					
B Science (Space Science and Astrophysics)	3	•							
B Science (Veterinary Bioscience)	3	•*							
B Social Sciences	3	•	•	•					
B Teaching (as a double degree)	4	•							
B Viticulture and Oenology	4	•	•	•					

• Bachelor is available through this intake.

* Other selection criteria and/or quotas may apply for acceptance at the University of Adelaide.

**Not all majors offered. Please inquire for availability.

Note: Programs with other entry criteria or quotas cannot be packaged.



Charlie Kong, Hong Kong
Pathway to Bachelor of Commerce

“I would recommend Bradford”

I had some friends study at Bradford two years before me and recommend it to my parents. Like them I would recommend my experience. I enjoyed the learning environment and improved my English speaking and learning skills the most.



FOUNDATION STUDIES PROGRAM

The Foundation Studies Program prepares students for successful transition to degree-level study and provides a pathway to the first year of a bachelor degree at the University of Adelaide. Program standards including curriculum and assessment are maintained by the University to ensure the highest academic standards.

Students accepted onto the Foundation Studies Program (FSP) receive an offer of a place to their chosen bachelor degree program from the University of Adelaide. Students who would not qualify for direct entry are enrolled as University of Adelaide students with admission conditional upon meeting the necessary prerequisites[†].

Students may change their selected bachelor degree provided any prerequisite subjects are covered. Our supportive staff will recommend subjects based on their long-term study goals. Lectures and tutorials, delivered by attentive teachers in a supportive learning environment, provide students with the academic grounding and confidence required to transition successfully to university. Student progress may be assessed through participation, essays, presentations, assignments and regular tests to ensure students are thoroughly prepared to take on their next academic challenge.

Pathways to competitive degrees

Academic counselling is available to ensure students take the correct subjects for their chosen bachelor degree. The University of Adelaide Schools of Medicine and Dentistry have additional admissions criteria. Elder Conservatorium of Music and Veterinary Bioscience also have additional admissions criteria.

The University of Adelaide School of Nursing welcomes students from FSP without further language testing (quotas apply). In addition to the required prerequisite subjects, Bradford FSP students also study English for Academic Purposes.

Language Support

Students are required to complete an accepted English language proficiency test or the Bradford placement assessment prior to the program to assess their level of English. This will allow us to recommend a study pathway, with a suitable duration and direction. For students who feel they might need to improve their level of English more information on our General Academic English (GAE) program can be found on page 8 and on the Bradford College website.

Students who pass their Foundation Studies Program subjects on the first attempt will meet the English language entry requirement and will not need to supply additional evidence of English proficiency to the University of Adelaide.

Program Overview

Students must study 5 subjects over 2 semesters. The required subjects will depend upon the bachelor degree program students wish to study at the University of Adelaide. Please refer to the website for further information and required subjects.

	Standard (FSP)	Standard (FSP)	Accelerated (FSPX)
Tuition fee (AUD)	\$23,200	\$23,200	\$23,200
Program duration	40 weeks	40 weeks	34 weeks
Intake dates 2015	9 Feb (Standard)	27 Jul (Standard)	19 Oct (Accelerated)
Contact hours	20 hours per week	20 hours per week	25 hours per week
Compulsory subjects	Critical Thinking English for Academic Purposes		
Other available subjects	Accounting Australian Studies* Economics Computing and Information Systems Design Studies	Maths Studies Specialist Maths Maths Methods Biology Chemistry Physics	

Students must also complete 20-25 hours of independent learning scheduled into a negotiated study plan.

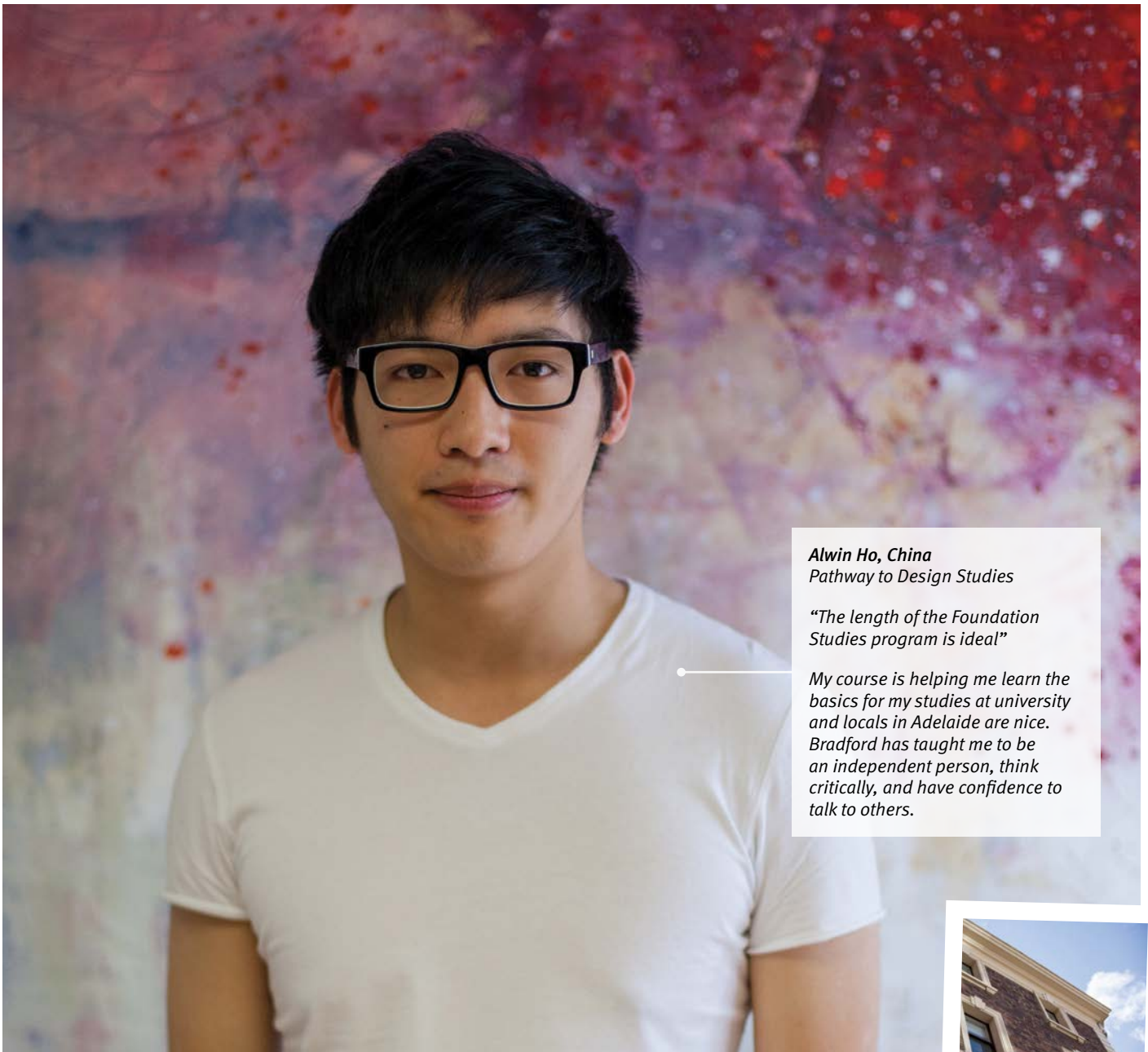
* Subject available in the February intake only.

Tuition fees listed above apply to international students for 2015 only and may be subject to change. Some additional services provided by Bradford College may also attract fees. Payment terms apply. For more information visit www.bradford.adelaide.edu.au

i Visit www.bradford.adelaide.edu.au/foundation-studies for more information



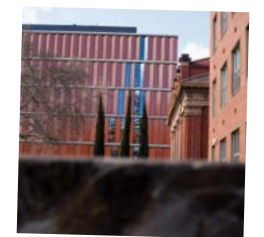
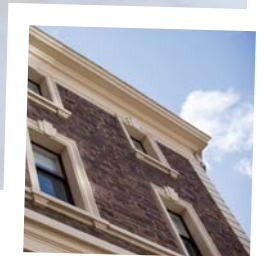
[†] Students may not be eligible to select programs with fixed quotas.



Alwin Ho, China
Pathway to Design Studies

“The length of the Foundation Studies program is ideal”

My course is helping me learn the basics for my studies at university and locals in Adelaide are nice. Bradford has taught me to be an independent person, think critically, and have confidence to talk to others.



Foundation Studies Pathway

Upon successful completion of their foundation studies program, students may progress into the first year of their selected undergraduate degree at the University of Adelaide





Shirley Kong, China
Pathway to Food and Nutrition Science

"The study and pathway advice I have received has helped me"

The study environment is great. Some of my favourite times at Bradford are when I have had time chatting with the teachers during class. The thing I like most though is the place I live; my host family is really nice.



DEGREE TRANSFER PROGRAM

Successful completion of the Degree Transfer program leads to a place in the second year of selected bachelor programs at the University of Adelaide. Students can choose a Degree Transfer program according to their individual needs, academic advancement and unique career aspirations.

Students who successfully complete their Degree Transfer program and meet the required academic grades determined by the University will secure a place in the second year of their selected undergraduate program at the University of Adelaide. The Degree Transfer program is a combination of bridging material and first year course material from the University of Adelaide degree program with students sitting the same exams as the first year University students.

The curriculum table is available on the website and shows the subjects included as part of the University study plan for each stream. The English component offered by Bradford College is skills-focused and aims to assist students with developing their academic writing, speaking, listening and reading skills, in addition to increasing confidence in tutorials and improving note taking and referencing skills.

Pathways to competitive degrees

The Degree Transfer (DT) Health Sciences pathway also provides students with the option to apply for entry into the first year of the Bachelor of Nursing degree upon completion of the DT program. Please ask your Bradford representative for further information.

Language Support

For students who feel they might need to improve their level of English more information on our General Academic English program can be found on page 8 and on the Bradford College website.

Students who pass their Degree Transfer subjects on the first attempt will meet the English language entry requirement and will not need to supply additional evidence of English proficiency to the University of Adelaide.

Program Options

Our Degree Transfer options include an extended three-semester program, plus an accelerated and a standard two-semester direct entry option. The accelerated and standard options are designed to provide students with a pathway to suit their academic ability and the varying levels of knowledge, confidence and experience. Please visit the website to find out what subjects are included as part of the Degree Transfer program.

Degree Transfer Extended (DTE)

DTE offers students a 15-week bridging semester followed by two semesters comprising of the first-year curriculum of a bachelor degree program at the University of Adelaide. This program allows students to settle in to their new learning environment while preparing them for tertiary learning.

Degree Transfer Standard (DTS)

DTS offers students with sufficient English and academic qualifications to waive the bridging semester included as part of DTE. Students on the DTS program study the first year University of Adelaide curriculum with the guidance and support of Bradford College.

Degree Transfer Accelerated (DTX)

DTX is an accelerated program within the Commerce stream allowing students to gain entry into the second year of their selected bachelor program at the University of Adelaide in July.

Program Overview

Students must study four units plus English each semester.

	Streams	Tuition Fee (AUD)	Program duration	Intake dates 2015	Contact hours
DTE	Commerce Economics Finance	\$32,940	15 months 1 Bridging Semester + 2 Semesters	16 Mar 26 Oct	20 hours per week Bridging Semester Semester 1 & 2 Depend on choice of Bachelor Degree
	Engineering	\$37,800			
	Computer Science Science* Health Science	\$37,080			
DTS	Commerce Economics Finance	\$25,920	12 months 2 Semesters	23 Feb 20 Jul	Depend on choice of Bachelor Degree
	Engineering	\$28,680			
	Computer Science Science* Health Science	\$28,120			
DTX	Commerce Economics	\$23,960	9 months 2 Semesters	12 Oct	Depend on choice of Bachelor Degree

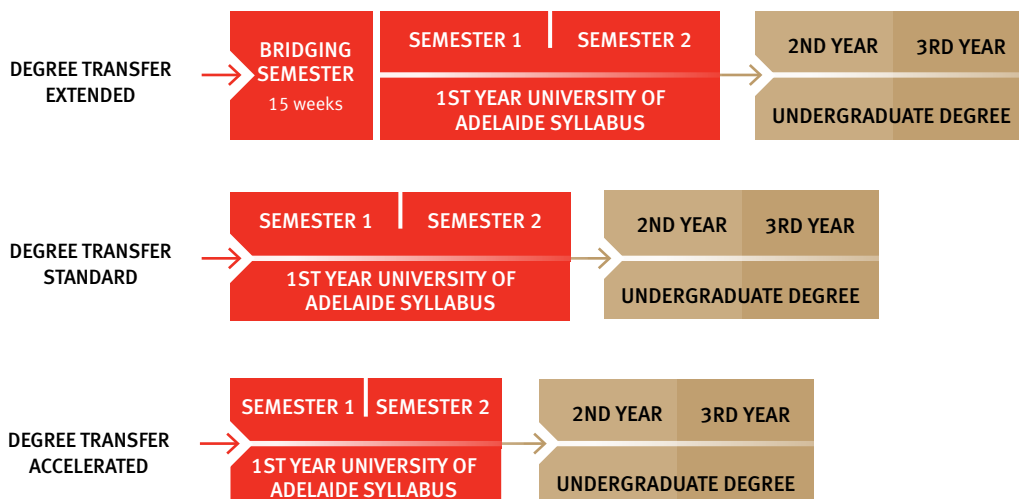
* Science intakes in March and July, not all majors offered. Please inquire for availability. Tuition fees listed above apply to international students for 2015 only and may be subject to change. Some additional services provided by Bradford College may also attract fees. Payment terms apply. Students can only apply for credit for subjects considered equivalent in content and standard to the subjects offered in the Bridging Semester of the Degree Transfer program.

Visit www.bradford.adelaide.edu.au/degree-transfer for more information




Degree Transfer Pathway

Upon successful completion of their degree transfer program, students may progress into the second year of their selected undergraduate degree at the University of Adelaide





Maryam Al-Hawati, Oman
Pathway to Biomedical Science

 Winner Bradford General Academic English Award, 2013

My favourite moment was being awarded a certificate for being the top student in GAE, my communications skills have improved while I have benefitted considerably from getting to know people from all over the world. Bradford is famous for the quality of education it provides.

GENERAL ACADEMIC ENGLISH

Our General Academic English (GAE) program is designed to provide international students with the high-level English language skills required to enter, participate confidently in and successfully complete their chosen tertiary program.

Designed and taught by highly qualified and experienced TESOL professionals and accredited by the National ELT Accreditation Scheme (NEAS), our GAE program offers more than effective communication skills. Emphasis is placed on improving students' language skills in speaking, listening, reading and writing through a variety of interesting topics related to study in Australia. Acculturation into an English speaking academic environment at a tertiary level is also important for international students and a phase that is vital for ongoing success.

Students learn in small classes and are assessed weekly to monitor progress. Ongoing assessment and classroom participation are used to determine our students' readiness to enter their chosen academic program.

Students who do not have an accepted current English language proficiency score may complete our free placement test to assess their level of English prior to commencing their course. This will allow us to recommend a study pathway with a suitable duration and direction.

Students are required to complete the recommended program duration according to their current English level. Please go online to find out more.

Successful completion of GAE program meets English entry requirements for Foundation Studies and Degree Transfer programs.

Program Overview

Intakes	Contact hours	Class size
Correspond with chosen FSP or DT program entry	20 hours per week	Average 15

All applications will be assessed on an individual basis. IELTS or equivalent score on an alternative English test is required.



English programs are accredited by the National ELT Accreditation Scheme (NEAS)

Bradford College

132 Grenfell Street
Adelaide SA 5000
Australia

Telephone: +61 (0)8 8313 3430

Facsimile: +61 (0)8 8313 3877

bradford@adelaide.edu.au

www.bradford.adelaide.edu.au

 [bradfordcollege](https://www.facebook.com/bradfordcollege)

 [bradfordcollegeaus](https://www.youtube.com/bradfordcollegeaus)

 Follow us: [@bradfordadelaide](https://www.instagram.com/bradfordadelaide)

 [bradfordadl](https://twitter.com/bradfordadl)

University Affiliation



THE UNIVERSITY
of ADELAIDE

Bradford College is proud to be affiliated with the University of Adelaide.

The University of Adelaide
CRICOS Provider Code 00123M



Part of Kaplan, a leading global education provider.

Kaplan Business School Pty Ltd. ABN 86 098 181 947, trading as Bradford College.

The Bradford English Language programs are delivered under the registered entity Kaplan Business School Pty Ltd. CRICOS Provider Code 02426B

Foundation Studies and Degree Transfer programs are delivered under agreement with The University of Adelaide CRICOS Provider Code 00123M

Supporting Australian education in association with

